

Explosion-proof box explosion-proof socket distribution box



Explosion-proof box explosion-proof socket distribution box



Explosion proof Distribution Box is a compact, Ex-certified power solution for hazardous environments. Rated 16A at 220V with dual flush sockets, it's built for Zone 1 & Zone 21 operations.



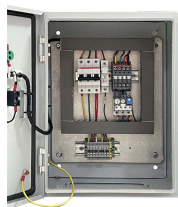
As a flameproof box manufacturer, SUREALL provides different types of explosion proof boxes and fittings. SUREALL innovated the advanced machining and testing technology to ensure the quality of ...



Constructed from corrosion-resistant, copper-free aluminum, the GUB series terminal boxes and junction boxes are available in a variety of sizes and configurations to suit different installation needs.



These explosion proof junction boxes / terminal boxes, plugs, sockets & connectors are for use in explosive atmospheres in compliance with the ATEX 94/9/EC Directive and IEC.



Durable Hexlon Explosion Proof Distribution Boxes and Electrical Enclosures, IECEx and ATEX certified for Zone 1 and Zone 2.



The boxes can be combined and installed freely to save space and meet the requirements of various distribution systems. Client requirements can be incorporated upon request.



Explosion Proof Enclosures & Electrical Boxes
Types of Explosion Proof Enclosures
Explosion proof enclosures form the backbone of electrical safety in hazardous locations. They protect internal ...



Take control of your electrical safety today with this complete set of customized distribution boxes. Choose an explosion-proof distribution box for reliable power distribution, easier maintenance, and ...



That's where explosion-proof distribution boxes become the unsung heroes of industrial safety. These aren't just metal boxes; they're meticulously engineered fortresses designed to contain potential ...

Contact Us

For more information, pricing, or custom solutions, please contact us:

Website: <https://indzawo.co.za>

Email: sales@indzawo.co.za

Phone: +27 71 296 8473

Address: 22 Quantum Street, Midrand, 1685, Gauteng, South Africa

This document is for informational purposes only. Specifications subject to change without notice.

