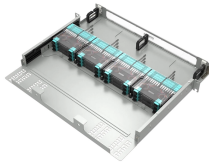


Fiber Optic Equipment Dual-Fiber Optic Module



Fiber Optic Equipment Dual-Fiber Optic Module



The dual-fiber optical module uses two optical fibers for signal transmission, which has higher stability and reliability. Choose the appropriate optical module type according to the application scenario and ...



We are an authorized distributor for Cisco, Huawei, and Ruijie, and we also produce our own fiber cables and optical modules. Our CCIE, HCIE, and ...



This article compares single-fiber and dual-fiber solutions and provides practical guidance for selecting the appropriate structure based on network requirements.



Know the key differences between Single and dual-fiber optical transceivers for efficient network deployment and optimization.



Corning has a wide variety of hardware solutions to choose from to fit your cabling needs. Choose from racks, panels, modules, splice trays, ethernet fiber switches and other structured cabling components.



Chia seeds, blackberries, kidney beans and lentils top the list of foods high in fiber. Fiber keeps your digestion regular and lowers your risk of some cancers.



What is a Dual Fiber SFP Module? A dual fiber SFP module (also known as a two-fiber SFP module) is the more traditional design in fiber optics. As the name suggests, it uses two fibers: ...



What are the 10 best foods for fiber? Some top choices to add to the diet are chickpeas, lentils, split peas, oats, apples, pears, almonds, chia seeds, Brussels sprouts, and avocado.



Shop DigiKey's large in-stock selection of Fiber Optic Transceiver Modules. View inventory, pricing and order now for same day shipping!



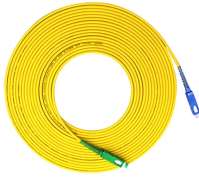
If the goal is to add more fiber to your diet, there are lots of great options. Fruits, vegetables, grains, beans, peas and lentils all help you reach that daily fiber goal.



Get the facts on dietary fiber foods (soluble, insoluble), high-fiber foods, its health benefits (weight loss), and why it's important to get your daily intake of fiber.



Fiber is the general name for certain carbohydrates -- usually parts of vegetables, plants, and grains -- that the body can't fully digest. While fiber isn't broken down and absorbed like...



This article compares single-fiber and dual-fiber solutions and provides practical guidance for selecting the appropriate structure based on network requirements.



Enjoy fiber internet, TV & phone services from Frontier. Explore the best Internet, TV, and phone packages and deals we offer. More digital solutions available.



Dual fiber modules use two separate fibers: one for transmitting (TX) and one for receiving (RX). This is the most common setup and is widely supported in standard optical networking.



Fiber is a type of carbohydrate that the body can't digest. Though most carbohydrates are broken down into sugar molecules called glucose, fiber cannot be broken down into sugar molecules, and instead ...



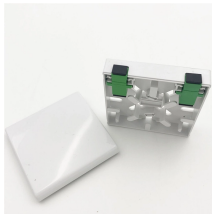
Dual Fiber CWDM Mux Demux is a device used in fiber optic communications that employs Coarse Wavelength Division Multiplexing (CWDM) technology to multiplex and demultiplex multiple signals ...



This comprehensive guide explores the differences between single and dual fiber SFPs, their respective benefits, limitations, and use cases—helping you make an informed choice that aligns with your ...



The recommended amount of fiber is 21-25 grams per day for women and 30-38 grams per day for men (at least 14 grams for every 1000 calories). Increase fiber in your diet slowly to avoid side effects.



Fiber is found in plant-based foods, particularly beans, nuts, fruits, and vegetables. Fiber has many health benefits, including reducing risk of cardiovascular disease, type 2 diabetes, and ...



We are an authorized distributor for Cisco, Huawei, and Ruijie, and we also produce our own fiber cables and optical modules. Our CCIE, HCIE, and RCNP engineers can design a converter ...

Contact Us

For more information, pricing, or custom solutions, please contact us:

Website: <https://indzawo.co.za>

Email: sales@indzawo.co.za

Phone: +27 71 296 8473

Address: 22 Quantum Street, Midrand, 1685, Gauteng, South Africa

This document is for informational purposes only. Specifications subject to change without notice.

