

Fiber Optic Information Panel Back Box



Fiber Optic Information Panel Back Box



The FTTH fiber panel box provides superior protection as the main function of the panel is to fix the module, protect the cable at the information outlet, and play a role similar to a screen.



Corning has a wide variety of hardware solutions to choose from to fit your cabling needs. Choose from racks, panels, modules, splice trays, ethernet fiber switches and other structured cabling components.



Share to: FCST02107 Optical Fiber Information Panel Easy slick-in cover mounting. All the modules are free from weld. Small size, light weight, pleasing in appearance.



CommScope wall boxes offer efficient fiber connectivity. Easy installation, versatile sizes, and superior cable management.



The recommended amount of fiber is 21-25 grams per day for women and 30-38 grams per day for men (at least 14 grams for every 1000 calories). Increase fiber in your diet slowly to avoid side effects.



If the goal is to add more fiber to your diet, there are lots of great options. Fruits, vegetables, grains, beans, peas and lentils all help you reach that daily fiber goal.



The FTTH fiber panel box provides superior protection as the main function of the ...



Available for both 12-fiber and 24-fiber configurations, they fit into fiber optic enclosures and provide a reliable, organized solution for on-site fiber optic terminating.



Fiber optic panels primarily secure and protect fiber optic field connectors. Made of high quality PC (flame retardant polycarbonate) material with certain fire resistance, all materials meet ROHS ...



Chia seeds, blackberries, kidney beans and lentils top the list of foods high in fiber. Fiber keeps your digestion regular and lowers your risk of some cancers.



For convenience, order a rackmount panel that's preloaded with an adapter panel! Accept up to 48 fibers housed within a 1U space.



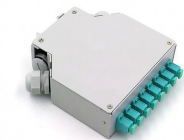
Fiber Optic Wall Mount Box with LC Couplers for Single Mode & Multimode Fiber Optic Cable. | Fiber Box Enclosure for MPOE's, Network Rooms, and IDF Rooms. (LC 6 Strand OS1/OS2)



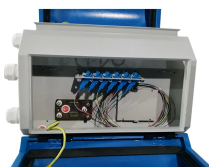
Fiber is found in plant-based foods, particularly beans, nuts, fruits, and vegetables. Fiber has many health benefits, including reducing risk of cardiovascular disease, type 2 diabetes, and ...



With OEM/ODM customization available, FiberMania ensures that every fiber optic termination box is tailored to your application—delivering quality, scalability, and ease of installation.



Get the facts on dietary fiber foods (soluble, insoluble), high-fiber foods, its health benefits (weight loss), and why it's important to get your daily intake of fiber.



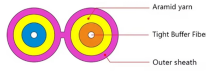
Discover the best assortment fiber optic enclosures and interconnect boxes. We have one of the largest inventories available. Expert tech support available to assist you. Call or check out what's available ...



Fiber is a type of carbohydrate that the body can't digest. Though most carbohydrates are broken down into sugar molecules called glucose, fiber cannot be broken down into sugar molecules, and instead ...



Fiber is the general name for certain carbohydrates -- usually parts of vegetables, plants, and grains -- that the body can't fully digest. While fiber isn't broken down and absorbed like...



Designed to simplify installation and improve experience, Legrand Fiber enclosures are ideal solutions for fiber networks in your data centers and building networks.



What are the 10 best foods for fiber? Some top choices to add to the diet are chickpeas, lentils, split peas, oats, apples, pears, almonds, chia seeds, Brussels sprouts, and avocado.



Fiber Optic Rack Mount Splice Box The Fiber Optic Rack Mount Splice Box provides protected in-rack fiber splicing with internal organizers, splice tray capacity, and durable aluminum construction. Ideal ...



Eat more fiber with six easy expert tips for daily gut health and digestion. Learn simple ways to add fiber to your diet, including foods and habits to try.



Discover how to select the best fiber optic terminal box for data centers, campus fiber backbones, outdoor FTTH networks, and enterprise fiber systems. Learn how environment, capacity, ...

Contact Us

For more information, pricing, or custom solutions, please contact us:

Website: <https://indzawo.co.za>

Email: sales@indzawo.co.za

Phone: +27 71 296 8473

Address: 22 Quantum Street, Midrand, 1685, Gauteng, South Africa

This document is for informational purposes only. Specifications subject to change without notice.

