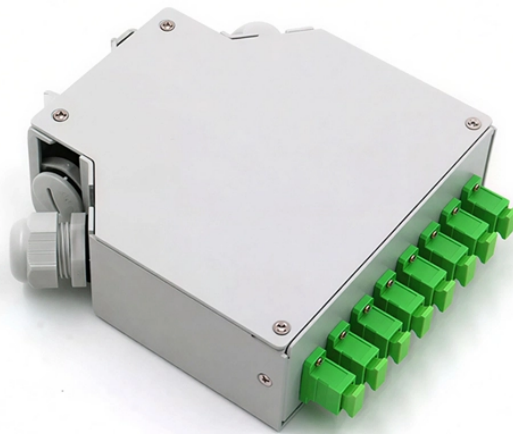


## Fiber optic cable ancillary facilities include



### Overview

This includes buried cables, aerial lines, splice closures, manholes, and outdoor cabinets. NTI specializes in high-performance fiber optic network solutions, helping ensure 24/7 connectivity, uptime, and performance. With a proven track record across mission-critical environments, NTI is the trusted partner for fiber design, deployment, and maintenance supporting leading data centers. Separate authorizations are required when co-locating on an existing powerline infrastructure (one permit for powerline, one permit for fiber optic). If co-locating on an existing powerline infrastructure, a letter of consent from the energy provider is required. If the proposed use will be placed. The Fiber Optic Association, Inc. The charter of the FOA was to promote professionalism in fiber optics through education, certification, and. An OSP fiber network specifically involves fiber optic cables deployed across vast geographic areas to connect central offices, data centers, neighborhoods, and individual homes. Think of it this way: a cable to your adjacent room is an inside plant, a cable to your neighbour's house is an outside. Fiber to the premise describes a fiber optic network that connects homes, businesses or any building (the "premise," or service location) to high speed broadband

service. Q: What is meant by G-PON?

A: Gigabit PON is a system that handles data rates up to 2.

## Fiber optic cable ancillary facilities include



OSP encompasses the physical fiber optic infrastructure that connects buildings and telecommunication facilities to the wider network. This includes overhead and underground cables, conduit systems, ...



Cabling: Fiber optic and copper cables that connect different pieces of network equipment. Power Supply Systems: Uninterruptible power supplies (UPS) and backup generators to ensure continuous ...



In telecom, OSP stands for outside plant. Put simply, OSP refers to all of the equipment, cables and infrastructure that are located outside of a building.



Support structures for fiber optic cable installations should be completed before the installation of the fiber optic cable itself. Outside plant structures should be installed in conformance with all permits ...



The document provides technical specifications for optical distribution frames, ancillary equipment, and accessories used in fiber optic networks. It defines ...



Cables may end when pulled into buildings or terminated at the top of poles where surveillance cameras or wireless access points are located. Splices where cables ...



Our fiber optic services include: Whether you're building a new data center, expanding capacity, or upgrading your existing network, NTI delivers the expertise, scalability, and responsiveness your ...



In telecom, OSP stands for outside plant. Put simply, OSP refers to all of the equipment, cables and infrastructure that are located outside of a building.



Feeder Cables - These cables are the main cable(s) being routed through a populated area. Assemblies are normally fiber-rich, including fiber counts from 72 to 1,728 strands. Distribution Cables - ...



Final engineering and civil design packages for all facilities and ancillary facilities that incorporate all mitigation measures developed in the NEPA analysis and incorporated into the final plan of ...



Cables may end when pulled into buildings or terminated at the top of poles where surveillance cameras or wireless access points are located. Splices where cables are concatenated can be placed in ...



OSP (Outside Plant) refers to all fiber optic infrastructure located outside of buildings. This includes buried cables, aerial lines, splice closures, manholes, and outdoor cabinets.



Cabling: Fiber optic and copper cables that connect different pieces of network equipment.  
Power Supply Systems: Uninterruptible power supplies (UPS) and ...

## Contact Us

For more information, pricing, or custom solutions, please contact us:

Website: <https://indzawo.co.za>

Email: [sales@indzawo.co.za](mailto:sales@indzawo.co.za)

Phone: +27 71 296 8473

Address: 22 Quantum Street, Midrand, 1685, Gauteng, South Africa

This document is for informational purposes only. Specifications subject to change without notice.

