

# Fiber optic repeater plugged into router



## Overview

A mesh extender can be added to your network in just a few simple steps. Connect the mesh extender's adapter to a power source. In this guide, we'll walk you through how to connect a WiFi extender to your router, set it up for maximum performance, and troubleshoot common issues. Deco supports two operating modes: Router Mode and Access Point Mode. In this guide, we'll walk you through how to. SFP stick in router or ONT plugged into Router. What's the difference?

I've seen home installations be completed with either a SFP stick plugged into the bottom and the patch lead plugged into that OR a separate ONT SFU box then plugged into the router but this means the client needs to plug sockets. If you are currently using the Verizon Router (CR1000A) or Fios Router (G3100), you can purchase a Fios Extender from the Fios equipment and accessories store. My Wi-Fi is on, why doesn't my device see the Wi-Fi network (SSID's)? Some devices may need their Wi-Fi drivers updated to support. This means that they are compatible with the vast majority of wireless routers on the market, whether purchased separately or provided by an ISP. Note an

important consideration regarding compatibility of WiFi range extenders:  
Some WiFi extenders operate on both the 2.

## Fiber optic repeater plugged into router



Fiber optic internet delivers blazing-fast speeds and reliable connectivity, making it a top choice for modern homes and businesses. However, setting up a fiber optic connection to your router ...



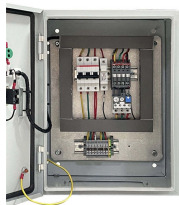
Learn how to connect a WiFi extender to your router with this simple step-by-step guide. Improve coverage, fix dead zones, and enjoy a stronger WiFi connection at home or in the office.



With a degraded signal, you may not be getting the most out of your AT& T Fiber internet service. By using the AT& T Smart Wi-Fi ...



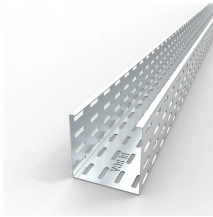
To get the most out of your Wi-Fi Extender, when connected wirelessly to the router, place it between your Fios Router and the weak Wi-Fi area. Reference the table below to ensure you have placed the ...



In that case, all you need is a route for the fiber jumper to the ONT, and the ISP still retains the modularity of separate ONT and router. The latter makes it easier if you don't want to use the ISP's ...



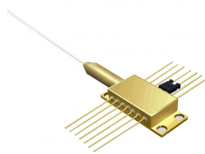
This guide will walk you through the steps for how to set up an old router as a Wi-Fi extender, also often referred to as a wireless internet or Wi-Fi repeater, to help boost your home or ...



Ready to beef up your Wi-Fi network? A wireless range extender is a less expensive alternative to a new router. (Some can even turn your router setup into a mesh system.) Here are the ...



The TP-Link Deco mesh system can work alongside your existing router to extend your home's Wi-Fi coverage. This guide walks you through the TP-Link Deco setup with your existing ...



This guide will walk you through the steps for how to set up an old ...



With a degraded signal, you may not be getting the most out of your AT& T Fiber internet service. By using the AT& T Smart Wi-Fi Extender, users can get better speeds while connected through Wi-Fi in ...



Mesh extenders strengthen your home network by capturing the Wi-Fi signal from your router and sharing it in hard-to-reach spots. They create additional access points in your home, ...



Try to change the wireless settings of the router. You can also try to update the firmware of the router and the extender. To find the latest firmware for your router and extender, visit the ...

## Contact Us

For more information, pricing, or custom solutions, please contact us:

Website: <https://indzawo.co.za>

Email: [sales@indzawo.co.za](mailto:sales@indzawo.co.za)

Phone: +27 71 296 8473

Address: 22 Quantum Street, Midrand, 1685, Gauteng, South Africa

This document is for informational purposes only. Specifications subject to change without notice.

