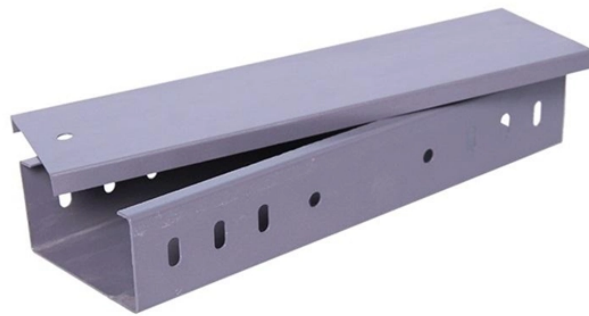


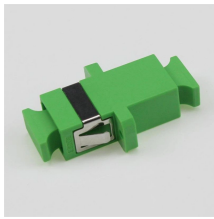
Finished cable tray climbing structure



Finished cable tray climbing structure



Definition of finished adjective in Oxford Advanced Learner's Dictionary. Meaning, pronunciation, picture, example sentences, grammar, usage notes, synonyms and more.



Official Lyric video for "Finished" from Caleb & John. Stream or download the song here: <https://fts.lnk.to/Fin...more>. We got into Denver a day early to enjoy the scenery - we'll see you...



FINISHED definition: ended or completed. See examples of finished used in a sentence.



With unmatched quality and service, we offer a variety of styles, materials and finishes available to support virtually any commercial and industrial cable management application requirement.



The Ladder Tray features light, rugged, tubular steel construction. It is designed for mechanical support and strain relief in long runs of cable and creates a smooth gradual bend for cable. Rail and stringer ...



Done is the past participle of the verb do. Finished is the past tense and past participle of the verb finish.



Cable tray length is selected based on the load to be supported, the distance between the supports (also referred to as the span), and handling and installation constraints.



The meaning of FINISHED is entirely done : brought to a completed state. How to use finished in a sentence.



In everyday writing and speech, mixing up “Finnished” and “Finished” is a common error. This article will clarify the correct usage of these terms, ensuring you always make the right choice.



Our wind certification report provides you with list of acceptable B-Line series cable tray supports, fittings and covers based off of the environmental conditions, cable loading, and type of cable tray in your ...



The design calls for four 12” cable trays vertically stacked with a concrete wall on one side. The trays are 6” apart with the bottom tray being 5'-0” above the finished floor.



This guide covers the critical steps, from selecting the right electrical cable tray and performing accurate cable fill calculations to managing a safe cable pull through and ensuring all bonding and grounding ...



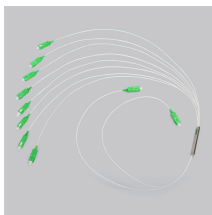
Cable ties are provided at spacing greater than 4 feet, thereby permitting cable movement within the trays. The damping ratio used for the cable tray system is dependent on the level of seismic input ...



Discover the essential guide to cable tray systems. Learn about ladder, trough, and wire mesh types, key components, and expert installation tips ...



Enable location access to see meets near you.
Rancho Dominguez Prep.



View the schedule of upcoming athletic events and competitions organized by Finished Results.



FINISHED definition: 1. completed, final or completely used : 2. having completed a particular task, or stopped using.... Learn more.



Compare solid, perforated and ladder trays, choose materials & finishes, and match fittings plus accessories for complete installations. Request drawings & a quote.



Cable tray fitting supports shall be located such that they meet the strength requirements of straight sections. Install fitting supports per NEMA VE-2 guidelines, or in accordance with manufacturer's ...



Brought to a state of completion: a finished novel.
b. In a state of having completed something: The cook is finished preparing the meal. 2. a. Exhibiting a high degree of skill or refinement: an essay that was ...



Discover the essential guide to cable tray systems. Learn about ladder, trough, and wire mesh types, key components, and expert installation tips for safe and organized cable management.

Contact Us

For more information, pricing, or custom solutions, please contact us:

Website: <https://indzawo.co.za>

Email: sales@indzawo.co.za

Phone: +27 71 296 8473

Address: 22 Quantum Street, Midrand, 1685, Gauteng, South Africa

This document is for informational purposes only. Specifications subject to change without notice.

