

## Fire protection electrical box distribution box diagram



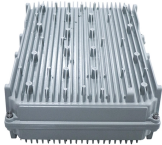
## Fire protection electrical box distribution box diagram



Some residents in the Wickenburg area have been placed under a "GO" evacuation status as crews battle a brush fire in the area.



An interactive wildfire map shows active fires burning in Broward and Miami-Dade as smoke impacts air quality and visibility across parts of South Florida.



General Technical Particulars for LT Distribution Boxes : - The L.T. Distribution Boxes should be of the dimensions as per the drawing & details in the table furnished.



This document provides a list of components in an electrical ...



This document provides a list of components in an electrical distribution box with their names and associated wiring diagrams. It includes tables of diodes, fuses, relays, and other components like ...



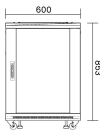
PROVIDE 24VDC POWER FROM FIRE ALARM PANEL OR FIRE ALARM AUX POWER AND PROVIDE BATTERY-BACKUP IN RADIO DIALER. PROVIDE ALL EQUIPMENT, CONNECTIONS, ...



These fire-resistant connection boxes and small distribution boards exclusively serve towards ensuring the maintenance of performance by installations over a certain period of time in the event of a fire.



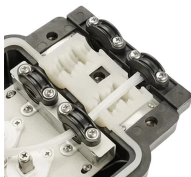
This information provides a foundation to understand electrical power distribution systems, the types of information that can be found on electrical drawings, and studies that are used to confirm proper ...



The ECU fire protection system was designed to meet new regulations, protecting domestic units and distribution boards from potential fire damage.



This publication shows how to wire and install the 4010-9825 24V Distribution Block into a 4010 Fire Alarm Control Panel (FACP). Refer to the 842-058 Field Wiring Diagram for additional wiring ...



678 Fire protection CAD blocks for free download DWG AutoCAD, RVT Revit, SKP Sketchup and other CAD software.



Interactive full-screen map showing live wildfire locations and tracking across the United States



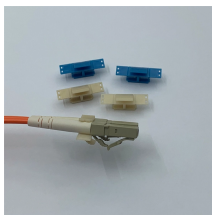
Whether you want to check today's fire activity, explore past fire seasons, or understand how weather and landscape interact with active incidents, the tools below put the information at your fingertips.



This design guide is meant to provide code references and examples to help an electrical engineer determine basic criteria that must be met for the installation of a fire pump.




Breaking news and live updates on wildfires.





LANL Standard Drawings and Details either (1) depict required format/content or (2) are templates that are completed by a Design Agency (LANL or external AE) for a design drawing package, in a ...





The Max Road Fire in the Everglades has ballooned to over 11,000 acres burned in South Florida.

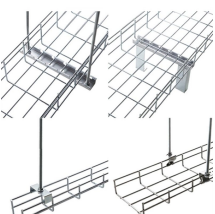
	<p>The single-line diagram is the blueprint for electrical system analysis. It is the first step in preparing a critical response plan, allowing you to become thoroughly familiar with the electrical distribution ...</p>
---	---

	<p>Current use of wall opening protective materials may allow for (1) reducing the spacing between electrical boxes contained on opposite sides of the wall and/or (2) increasing the size of metallic ...</p>
---	--

	<p>The Fire Potential Outlooks for predictions about the likelihood of future wildfire activity nationwide. The National Interagency Fire Center maps webpage for detailed maps of current wildfires, past fires, and ...</p>
--	---

	<p>12 miles NE of Opportunity &amp; 14 miles SE of Deer Lodge. Containment: - Acres: - 11 days ago.</p>
---	---

	<p>An interactive map shows active fires in the United States, including California, Oregon and Washington, as well as Canada.</p>
---	--

	<p>Most of the evacuation orders issued for the destructive Jones Fire along US 60 in Wickenburg were lifted Tuesday morning.</p>
---	---



FLOOR PLANS ARE DIAGRAMMATIC. CONTRACTOR SHALL COORDINATE EXACT LOCATIONS WITH ARCHITECTURAL DRAWINGS AND FIELD DETERMINE EXACT CONDUIT, PULL BOX, ...

## Contact Us

For more information, pricing, or custom solutions, please contact us:

Website: <https://indzawo.co.za>

Email: [sales@indzawo.co.za](mailto:sales@indzawo.co.za)

Phone: +27 71 296 8473

Address: 22 Quantum Street, Midrand, 1685, Gauteng, South Africa

This document is for informational purposes only. Specifications subject to change without notice.

