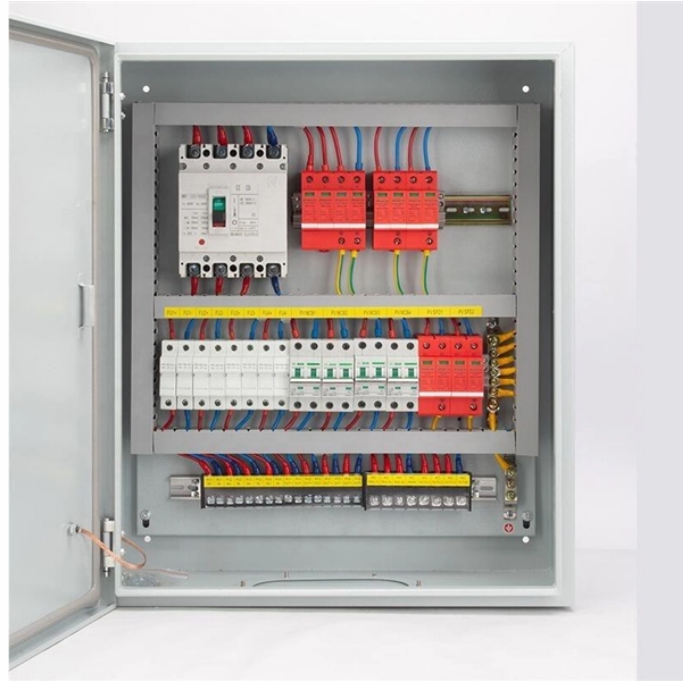


## Flexible Connection Design for Cable Trays



## Flexible Connection Design for Cable Trays



Cable tray (or cable ladder) systems are a popular alternative to electrical conduit systems, as they have an outstanding record for dependable service, design flexibility and cost savings in commercial and ...



Choose from our selection of flexible cable trays, including over 475 products in a wide range of styles and sizes. Same and Next Day Delivery.



Hubbell's NEXTFRAME® Ladder Tray is the effective and widely used cable runway that supports and delivers bundles of cable between cabinets, racks, and closets, along walls, and suspended from ...



NewReach offers a versatile cable tray that effectively manages and organizes cables in various environments. These trays are designed to bend and adapt to irregular shapes, providing flexibility ...



Flextray is a flexible, field-adaptable way to manage cables throughout your project. The tray itself can be cut and bent to the needs of the installer on the jobsite, allowing cable runs to be adjusted as ...



As the leading cable tray manufacturers and suppliers, JLH Electric offers a wide range of accessories and spare items, including tray supports and tray connections. We can provide custom design and ...



This document provides guidance on designing cable tray systems for commercial and industrial applications. It discusses key factors to consider such as cable tray ...



In designing supports for a cable tray system, consideration should be given to the loads associated with future cable additions and any additional loading that may be applied to the cable tray system (e.g., ...



This document provides guidance on designing cable tray systems for commercial and industrial applications. It discusses key factors to consider such as cable tray types, lengths, strength, load ...



Cable tray wiring systems are well suited for computer aided design drawings. A spread sheet based wiring management program may be used to control the cable fills in the cable tray.



NEMA VE 1-2017 Specifies requirements for metal cable trays and associated fittings designed for use in accordance with the rules of Canadian Electrical Code, Part I and the National Electrical Code®

## Contact Us

For more information, pricing, or custom solutions, please contact us:

Website: <https://indzawo.co.za>

Email: [sales@indzawo.co.za](mailto:sales@indzawo.co.za)

Phone: +27 71 296 8473

Address: 22 Quantum Street, Midrand, 1685, Gauteng, South Africa

This document is for informational purposes only. Specifications subject to change without notice.

