

## French technical support for optical line terminal SFP



## French technical support for optical line terminal SFP



Le terminal de ligne optique (OLT) est un périphérique de bureau central servant de hub de communication réseau à fibre optique. Il est principalement responsable de la conversion des ...



An optical line termination (OLT), also called an optical line terminal, is a device which serves as the service provider endpoint of a passive optical network.



These modules, including SFP, SFP+, and SFP28, are widely used in enterprise networks, data centers, and carrier-grade deployments to ensure high-speed, reliable connectivity. ...



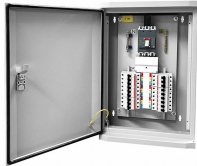
Cortina family of Optical Line Terminal (OLT) SoCs completes the end-to-end solutions for EPON and 10G-EPON applications. Our silicon devices have been interoperability-tested, field-proven and ...



Nous assurons un support en français en jours et heures ouvrés. Pureoptics c'est le meilleur du module SFP compatible et la plus large gamme de transceivers fibre optique sur le marché français.



Genexis offers efficient fiber network termination solutions, including Optical Network Terminals (ONTs) for any deployment scenarios or network upgrades.



Les OLT et ONT/ONU modernes utilisent des modules fibre optique compacts pour assurer les services GPON triple-play. Ces modules sont appelés ...



Pour assurer votre réseau PON, l'utilisation d'OLT et ONU sont nécessaires. Ainsi nous vous proposons une large gamme d'OLT et d'ONU, contactez-nous pour plus d'info!



Optical Line Terminal The UFiber OLT supports up to 128 ONU CPEs per GPON port with physical links of up to 20 km in distance. It also features SFP+ connectivity for uplinking.



Understanding the working principle of optical modules—especially SFP transceivers—is critical for network engineers, data center operators, and telecom professionals tasked with building and ...



In simple terms, an Optical Line Terminal (OLT) is the service provider's endpoint hardware in a passive optical network. It serves as the main aggregation point, acting as the bridge between your ISP's ...

## Contact Us

For more information, pricing, or custom solutions, please contact us:

Website: <https://indzawo.co.za>

Email: [sales@indzawo.co.za](mailto:sales@indzawo.co.za)

Phone: +27 71 296 8473

Address: 22 Quantum Street, Midrand, 1685, Gauteng, South Africa

This document is for informational purposes only. Specifications subject to change without notice.

