

GPON optical module uplink and downlink



GPON optical module uplink and downlink



It connects the business site to a GPON network without requiring purpose-built terminals and protects investments in existing terminals. It complies with link protection.



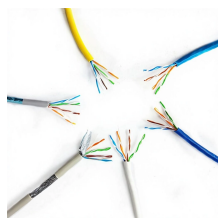
EPON and GPON are the two main members of the optical network access, each has its own merits. Let's compare them in various aspects.



OLT-G1V is a box-type GPON OLT with one PON port. The price of OLT-G1V is very attractive and the performance is very strong. The splitting ratio of its PON port is 1:128, and the farthest transmission ...



Optical Distribution Network (ODN) planning is critical to a successful GPON implementation. It is essential to have a well-planned network design to ensure CPEs receive a usable signal, allow for ...



The HA7302GD adopts a MINI 2PORT design, supporting two GPON optical ports, two 10 Gigabit SFP optical ports, and four Gigabit adaptive RJ45 electrical ports for uplink.



The GPON OLT SFP transceiver provides an asymmetric 1.244Gbps upstream and 2.488Gbps downstream, reaching a link up to 20km over SMF via SC/UPC connector. It can operate at ...



A GPON optical network unit with a 2.5 GbE port that delivers 1.2 Gbps uplink / 2.5 Gbps downlink speeds at distances up to 20 km. Note. A PoE adapter is included only with single-unit purchases.



V1600GS is a box-type GPON OLT with one PON port. The price of V1600GS is very attractive and the performance is very strong. The splitting ratio of its PON port is 1:128, and the ...



GPON delivers downstream speeds up to 2.5 Gbps and upstream speeds up to 1.25 Gbps, while XGS-PON provides symmetrical 10 Gbps speeds, making the device suitable for high ...



GPON exhibits a downlink bandwidth of 2.488 Gbps and an uplink bandwidth of 1.244 Gbps. In contrast, EPON offers symmetrical downstream and upstream bandwidth, each at 1 Gbps.



Accordingly, the OLT optical module transmitter on the PON link operates in continuous mode, while the ONU module transmitter operates in burst ...



GPON is an alternative to Ethernet switching in campus networking. GPON replaces the traditional three-tier Ethernet design with a two-tier optic network which eliminates access and ...



The EPON and GPON optical modules mentioned above can be provided by ETU-LINK. The optical modules produced are compatible with ...

Contact Us

For more information, pricing, or custom solutions, please contact us:

Website: <https://indzawo.co.za>

Email: sales@indzawo.co.za

Phone: +27 71 296 8473

Address: 22 Quantum Street, Midrand, 1685, Gauteng, South Africa

This document is for informational purposes only. Specifications subject to change without notice.

