

# Indzawo Optic Connect

## Georgia Dawn Bridge



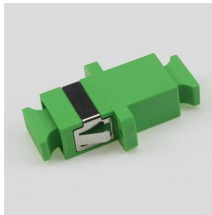
## Georgia Dawn Bridge



The Diamond Bridge in Georgia is one of the country's most captivating attractions, known for its stunning design and breathtaking views. Located near Dashbashi Canyon, this bridge spans over a ...



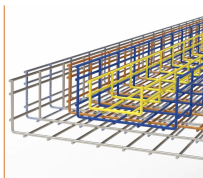
We're thrilled to announce that the Georgia Department of Behavioral Health & Developmental Disabilities (DBHDD) is back as a Dental Dash at Dawn Bridge Sponsor again this year!



This article delves into the allure of Diamond Bridge and Waterfall, exploring their unique features and the compelling reasons they stand as must-visit destinations ...



At Georgia's new "Diamond" Bridge, visitors can ride a bike on a wire across the 200-metre deep Dashbashi canyon. #aljazeeraenglish #aljazeeraupdates...more.



Dashbashi Canyon, recently renamed Tsalka Canyon, is quite an impressive natural monument, with its lush greenery, cascading waterfall, and now a 2,400-meter-long glass bridge with ...



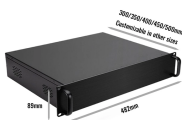
Imagine walking on a transparent glass bridge, 240 meters long, with a sheer 280-meter drop beneath your feet. The Diamond Bridge offers just that, a thrilling experience that combines an ...



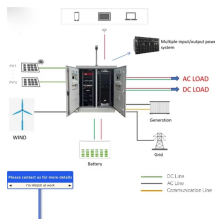
Why Visit Dashbashi Canyon  
Where Is Dashbashi Canyon in Georgia?  
How to Get to Dashbashi Canyon from Tbilisi  
The Best Time to Visit Dashbashi Canyon  
What to Expect at Dashbashi Canyon After The Reconstruction  
Dashbashi Canyon Hike Down The Waterfalls  
Is It Worth Visiting Dashbashi Canyon After The Reconstruction?  
Other Things to Do Nearby Dashbashi Canyon  
Where to Eat on Your Way  
Where to Stay Near Dashbashi Canyon  
Getting to Dashbashi Canyon from Tbilisi is relatively easy; it depends on your preferred transportation. Here, I outline the best ways to get to the canyon: renting a car in Georgia, hiring a driver in Tbilisi, or doing it on your own with a marshrutka. See more on [redfedoradiary.travel-georgia.club](http://redfedoradiary.travel-georgia.club)



This article delves into the allure of Diamond Bridge and Waterfall, exploring their unique features and the compelling reasons they stand as must-visit destinations in Georgia.



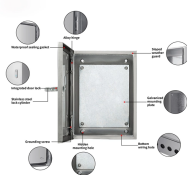
Find locations of ports and ships using the near Real Time ships map. View vessel details and ship photos.



In the quiet blue light of dawn, an old railroad bridge stands sentinel over the still Flint River in Bainbridge, Georgia. Its rusty, weathered form and the decaying pilings of a forgotten past are ...



Opening information and heights for all bridges in GA.



Discover a stunning 19th-century covered bridge in Georgia that transports you to another era with scenic trails and peaceful creek views.

## Contact Us

For more information, pricing, or custom solutions, please contact us:

Website: <https://indzawo.co.za>

Email: [sales@indzawo.co.za](mailto:sales@indzawo.co.za)

Phone: +27 71 296 8473

Address: 22 Quantum Street, Midrand, 1685, Gauteng, South Africa

This document is for informational purposes only. Specifications subject to change without notice.

