

# **German Special Optical Cable G 657A2**



## German Special Optical Cable G 657A2



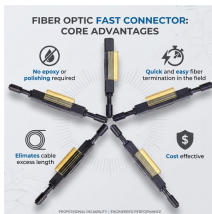
Not only that, the mode field diameter (MFD) of the fiber is consistent with the standard G.652 single-mode fiber, which makes it have low connection loss with G.652 optical bare fiber, including splice ...



This OS2 fibre patch cable is ideal for connecting 1G/10G/25G/40G/100G/400G Ethernet connections. It is best suited for long distance application and can transport data for up to 10km at 1310nm, or up to ...



This objective technical guide will break down the G.652D vs G.657A1 vs G.657A2 comparison, analyzing their physical structures, bend radii, and Mode Field Diameter (MFD) ...



ions in ducts and on trays and can be direct buried with sand back-filling in outdoor applications. The cable features corrugated steel tape armor for rodent protection



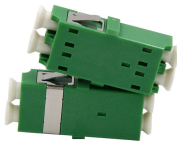
“Leviton is dedicated to designing, developing and manufacturing sustainable high performance structured cabling and specialty cabling solutions.” The information contained in this document is ...



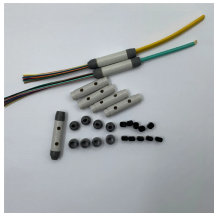
The Microfocus 4F (1x4) Indoor Blown Fiber Cable G.657A2 is designed for in-building installations and is typically installed using 7/4 mm indoor microducts. The cable consists of 4 singlemode G.657A2 ...



Meets or exceeds the ITU-T Recommendation G.652.D/G.657.A1/G.657.A2/G.657.B2 Including the IEC 60793-2-50 type B1.3/B6.a1/B6.a2/B6.b2 Optical Fiber Specification.



Optical properties of the SM fiber are achieved through a germanium doped silica based core with a pure silica cladding which meets ITU-T G657A2, UV curable acrylate protective coating is applied ...



Indoor tight buffered optical fiber distribution cable with Low Smoke Zero Halogen outer jacket. 6 fibers SM OS2 G.657.A2. CPR Euroclass B2ca. For indoor use in structured (premises) wiring systems: ...



The Digitus cable offers the possibility to easily expand and complete the fibre optic network in the house. The cable is for use as a connection cable between building distributor and floor distributor or ...

## Contact Us

For more information, pricing, or custom solutions, please contact us:

Website: <https://indzawo.co.za>

Email: [sales@indzawo.co.za](mailto:sales@indzawo.co.za)

Phone: +27 71 296 8473

Address: 22 Quantum Street, Midrand, 1685, Gauteng, South Africa

This document is for informational purposes only. Specifications subject to change without notice.

