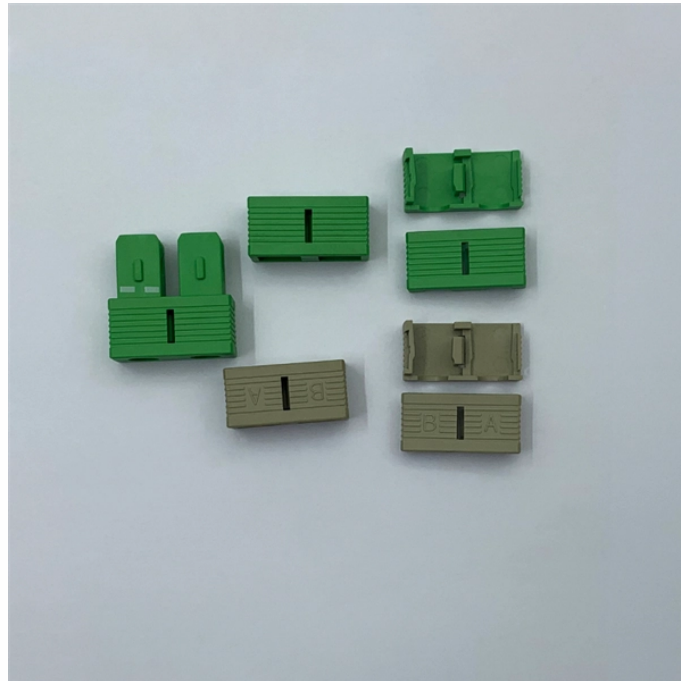


Grounding of the outer casing of the household electrical distribution box in Kyrgyzstan



Overview

However, for experienced DIYers, this guide provides a detailed, step-by-step approach to ensuring your circuit breaker box is properly grounded, enhancing electrical safety throughout your home. Navigating the grounding and bonding of electrical systems can be a tall task unless you have taken the time to familiarize yourself with the requirements of Article 250 of NFPA 70[®], National Electrical Code[®] (NEC[®]). Where should you start?

The following are some common questions from individuals. Proper electrical enclosure grounding is a vital facet for providing safety, performance and uptime. During fault. Today, we're diving deep into the world of distribution box grounding, breaking down the standards, and shining a light on those sneaky mistakes that even experienced electricians sometimes make. Understanding how to properly install.

Grounding of the outer casing of the household electrical distribution



Grounding and bonding are the basis upon which safety and power quality are built. The grounding system provides a low-impedance path for fault ...



Open the distribution box and find the position marked with the grounding plate or PE letter. This position is the connection point of the grounding ...



Grounding and bonding are the basis upon which safety and power quality are built. The grounding system provides a low-impedance path for fault current and limits the voltage rise on the ...



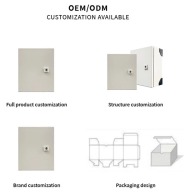
All metal boxes in the building's branch circuitry must be bonded. Non-metallic boxes are not required to be bonded, but the branch circuit's ground wire must extend to any fixture or device ...



Control panels typically feature an input power feed having a grounding conductor that is ultimately bonded to the electrical enclosure. This guide discusses some of the common practices on ...



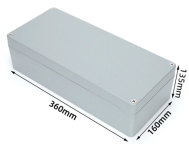
Typically, the ground wire connects to the outer casing of electrical boxes, appliances, or tools. This is why the grounding conductor is also called a case ground. The grounding conductor is ...



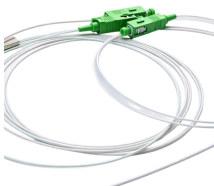
Open the distribution box and find the position marked with the grounding plate or PE letter. This position is the connection point of the grounding wire in the box.



Whether you're a seasoned pro or just starting out, this comprehensive guide will give you practical insights into proper grounding techniques, with a special focus on how selecting quality ...



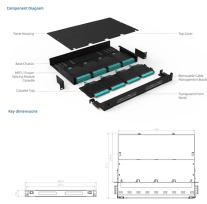
Learn how to properly ground your residential electrical system. Essential steps for safety, surge protection, and correct installation.



In grounding or earthing, electric circuit or apparatus is connected to the earth by a metallic conductor of negligible resistance. This conductor should have good conductivity, high tensile and ...



These tables help you properly size wiring for the grounding and bonding of your electrical system. Becoming familiar with the proper use of these tables can help installers ensure proper grounding ...

	<p>However, for experienced DIYers, this guide provides a detailed, step-by-step approach to ensuring your circuit breaker box is properly grounded, enhancing electrical safety grounding ...</p>
---	--

Contact Us

For more information, pricing, or custom solutions, please contact us:

Website: <https://indzawo.co.za>

Email: sales@indzawo.co.za

Phone: +27 71 296 8473

Address: 22 Quantum Street, Midrand, 1685, Gauteng, South Africa

This document is for informational purposes only. Specifications subject to change without notice.

