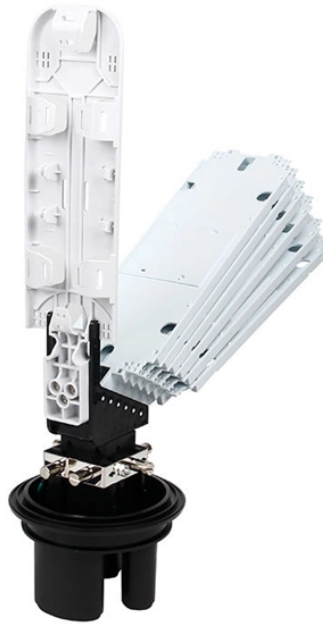


Grounding pin of construction site power distribution box



Overview

Attach a ground wire from one of the threaded studs (A) at the bottom of the housing, to the mounting plate (B). The ground resistance between all system parts shall be $<$. Learn what OSHA requires for electrical grounding in general industry and construction, and what violations can cost you. OSHA's grounding requirements are spelled out primarily in two sets of regulations: 29 CFR 1910 Subpart S for general industry workplaces, and 29 CFR 1926 Subpart K for. Temporary wiring shall be removed immediately upon completion of construction or the purpose for which the wiring was installed. General requirements for temporary wiring. Each DISTRIBUTION BOX and controller must be grounded. 26 mm² (10 AWG) ground wire must be used, and in all other markets a 6 mm² must be used. However, exposure to weather, frequent relocation, rough use and other conditions not normally encountered with conventional wiring systems necessitate special consideration not required in other applications or in completed structures. The low-voltage distribution box, as a device for regulating the circuit system, needs to be so. How should the low-voltage distribution box be grounded?

Now let's explain the grounding mode of low-voltage distribution box?

The first letter T of TT grounding power supply system indicates that the. Safety of Personnel: By safely channeling fault currents into the ground, proper grounding helps to reduce the risk of electric shock to personnel.

Grounding pin of construction site power distribution box



This paper using simple terms and examples will discuss the grounding and bonding system as it relates to both permanent and temporary electrical system installations, specific ...



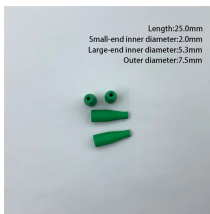
This bridge-type terminal block is designed for secure and efficient grounding and neutral wire connections in power distribution systems. Featuring a pure copper ...



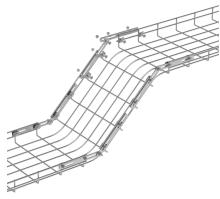
Each DISTRIBUTION BOX and controller must be grounded. On the US market, a 5.26 mm 2 (10 AWG) ground wire must be used, and in all other markets a 6 mm 2 must be used.



The grounding pin is not electrically connected to the device yoke, and, so, not connected to the metallic outlet box. It is therefore “isolated” from the green wire ground.



Everything looks perfect until the moment of truth arrives. That's why today we'll break down the life-or-death details of grounding distribution boxes and cable shielding layers using plain ...



What are the grounding methods of low-voltage distribution cabinets? I believe that after reading these, I will have a certain understanding of this and choose the appropriate connection mode according to ...



This standard contains symbols commonly and primarily used on electrical construction drawings. Related symbols are organized into different groups, and each symbol within a group has its own ...



To equalize ground potential static wire ground leads, arrester ground leads, neutral ground leads and equipment case ground leads shall be bonded together with the only exceptions noted in the ...



Unless installed in a complete metallic raceway, each branch circuit shall contain a separate equipment grounding conductor, and all receptacles shall be electrically connected to the grounding conductor.



The installation of grounding methods for transmission lines is absolutely necessary in order to guarantee the safety, dependability, and effectiveness of power distribution systems.



All 120-volt, single-phase, 15- and 20-ampere receptacles shall be of the grounding type and their contacts shall be grounded by connection to the equipment grounding conductor of the circuit ...



Learn what OSHA requires for electrical grounding in general industry and construction, and what violations can cost you.

Contact Us

For more information, pricing, or custom solutions, please contact us:

Website: <https://indzawo.co.za>

Email: sales@indzawo.co.za

Phone: +27 71 296 8473

Address: 22 Quantum Street, Midrand, 1685, Gauteng, South Africa

This document is for informational purposes only. Specifications subject to change without notice.

