

## Horizontal installation angle of cable trays



### Overview

Horizontal adjustment is proportionate to the length of the vertical rods. Position the clamps (SC) around the siderails of the. Calculate horizontal, vertical, or compound cable tray offsets based on bend angle, offset distance, and available installation space. 9A-FSP(X) Tray Width Up to 36" (X) = insert 4", 5", 6" or 7" side rail height. Installation Instructions Q Tools Needed: Wrench, metal cutting machine or tool, and drill. Cable tray system design shall comply with National Electrical Code® (NEC® ) Article 392, NEMA VE 1, and NEMA FG 1 and follow safe work practices as described in NFPA 70E. Grind away any burrs or sharp edges. Apply touch up paint where needed.

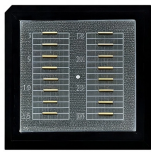
## Horizontal installation angle of cable trays



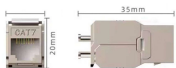
7.1.5 Install cable tray as per latest issued Approved for Construction drawing. Bevel the sharp edges and burrs from cut/machined parts to prevent damage to cable insulation during cable pulling activity.



Center hung tray supports allow for quicker and easier cable installation by allowing cables to be deposited into tray systems from each side. There is a maximum load capacity per hanger of 318 kg ...



Field cut the cable tray/ladder based on the desired angle to be made to fit with the installation. Mark a line on the cable tray/ladder where the cutting will occur.



Use this guide to learn the most effective installation practices when installing Cablofil tray. Each example of bends and tee's clearly illustrate proper tray cutting combined with recommended usage ...



Center Clip Used to connect two sections of basket tray at any angle; also used to secure two halves of one tray section formed into a horizontal bend.



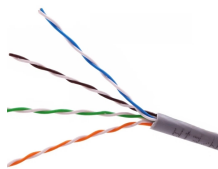
When fitting cable trays and their accessories, the products are cut on site to create changes of direction, adjust sections, etc. Damage can also occur during handling; as a result, both the ...



To install the cable tray supports, first find the required elevation from the floor to the bottom of the cable tray and establish a level line with a laser or a nylon string.



Cable tray length is selected based on the load to be supported, the distance between the supports (also referred to as the span), and handling and installation constraints.



Some applications may require the cable tray to support the weight of a single, dead object in addition to the cable loads. Specifications typically require this to be applied at the midpoint of the span between ...



This document provides installation guidelines for cable trays, including: 1) Cable trays come in perforated and ladder types, with perforated trays made of steel ...



Cut at an angle away from the new cable tray end.



Calculate horizontal, vertical, or compound cable tray offsets based on bend angle, offset distance, and available installation space. Use this tool to estimate sloped section length, horizontal run ...

## Contact Us

For more information, pricing, or custom solutions, please contact us:

Website: <https://indzawo.co.za>

Email: [sales@indzawo.co.za](mailto:sales@indzawo.co.za)

Phone: +27 71 296 8473

Address: 22 Quantum Street, Midrand, 1685, Gauteng, South Africa

This document is for informational purposes only. Specifications subject to change without notice.

