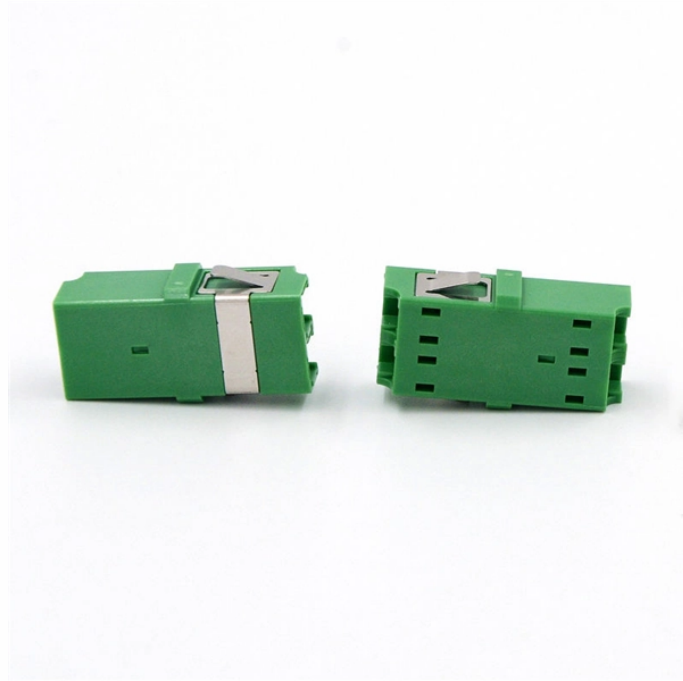


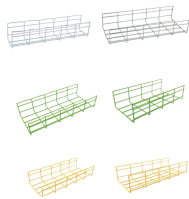
## Household type of wiring terminals for distribution boxes



## Household type of wiring terminals for distribution boxes



In this guide, we'll break down 16 types of electrical terminals, explain their uses, and show you how to pick the right one for your project. Whether you're wiring industrial machines, ...



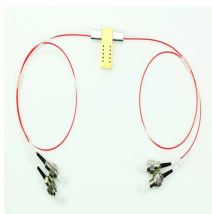
Even if you're an experienced homeowner or contractor, the complexity of wiring a home's electrical distribution board can be daunting. That's why having a clear, detailed diagram of ...



Learn about the many common types of wall and ceiling electrical boxes for switches, outlets, light fixtures, ceiling fans, and junction boxes.



In this #shorts video, I'll show you a simple household distribution box wiring connection. Learn how to wire MCBs, RCCB, and Busbars for a safe and efficien...



In this guide, we'll break down 16 types of electrical terminals, explain their uses, and show you how to pick the right one for your project. Whether you're wiring industrial machines, ...

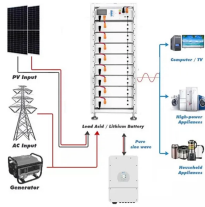
- ✓ Don't mix different (PVC, for standard wiring) materials
- ✓ Use only approved (PVC) for general household applications
- ✓ Use non-approved for fire-retardant applications



In this video, we'll walk you through the process of wiring a home distribution box with a detailed connection diagram. Whether you're an electrician or a DIY enthusiast, this guide will help you ...



House wiring (or residential electrical wiring) refers to the set of conductors, protective devices (circuit breakers/fuses), sockets, switches, light fittings and earthing arrangements installed ...



Can a distribution box be used somewhere in the home where one connector can enter and the circuit can be spliced and split into multiple outputs via terminal blocks, etc.? This box may ...



Discover a wide range of terminal blocks for your electrical projects. Find options with high voltage/current ratings, secure clamping, and easy installation.



For electrical setups requiring multiple wire connections, use the Gardner Bender 22 - 10 AWG 10-Circuit Terminal Block. This terminal block offers 2 rows of screw-type wire connectors and a 30 Amp ...



Discover everything you need to know about wiring terminals—from ring and spade to ferrule types—how to choose the right one for your application, materials, installation best-practices, and ...

## Contact Us

For more information, pricing, or custom solutions, please contact us:

Website: <https://indzawo.co.za>

Email: [sales@indzawo.co.za](mailto:sales@indzawo.co.za)

Phone: +27 71 296 8473

Address: 22 Quantum Street, Midrand, 1685, Gauteng, South Africa

This document is for informational purposes only. Specifications subject to change without notice.

