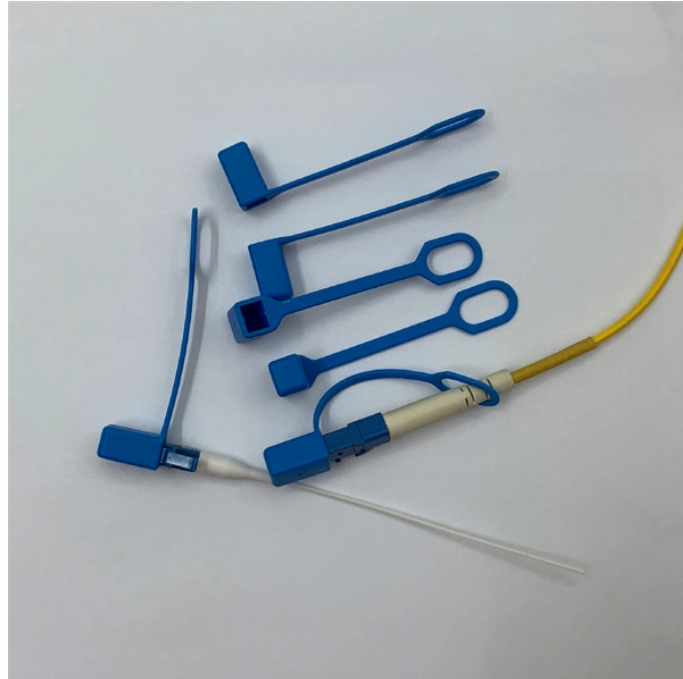


## How high should cable trays be off the ground



## How high should cable trays be off the ground



This guide covers the critical steps, from selecting the right electrical cable tray and performing accurate cable fill calculations to managing a safe cable pull through and ensuring all bonding and grounding ...



This comprehensive guide delves into the complexities of cable tray grounding, offering in-depth insights into its importance, principles, design considerations, installation best practices, and ...



A generic guideline developed by the Cable Tray Institute indicates that cable trays should not be filled in excess of 40-50% of the inside area of the tray or of the tray's maximum weight based on the cable ...



This comprehensive guide delves into the complexities of cable tray grounding, offering in-depth insights into its importance, principles, design ...



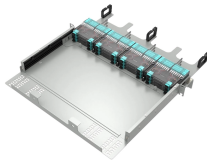
“Metallic cable trays that support electrical conductors shall be grounded as required for conductor enclosures in accordance with 250.96 and part IV of Article 250.”



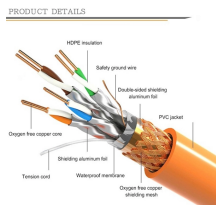
Here's what you need to know: Cable Types: Only use conductors rated for open-air environments, such as Tray Rated (Type TC) or Metal-Clad (Type MC) cables. Clearances: Maintain ...



Aluminum cable trays shall not be used as equipment grounding conductors for circuits with ground-fault protection above 2000 amperes.



When fitting cable trays and their accessories, the products are cut on site to create changes of direction, adjust sections, etc. Damage can also occur during handling; as a result, both the ...



NFPA780, Standard for the Installation of Lightning Protection Systems, provides criteria for building lightning protection. Cable tray systems that contain signal and communication circuits ...



Strong hangers or brackets should be used to ensure that cable trays do not fall or hang. According to the regulations under NEC 392.30, these supports have to be put at a consistent ...



This article provides a comprehensive framework that governs various aspects of cable tray installations, including the types of cables that are deemed acceptable for use, requirements for ...

## Contact Us

For more information, pricing, or custom solutions, please contact us:

Website: <https://indzawo.co.za>

Email: [sales@indzawo.co.za](mailto:sales@indzawo.co.za)

Phone: +27 71 296 8473

Address: 22 Quantum Street, Midrand, 1685, Gauteng, South Africa

This document is for informational purposes only. Specifications subject to change without notice.

