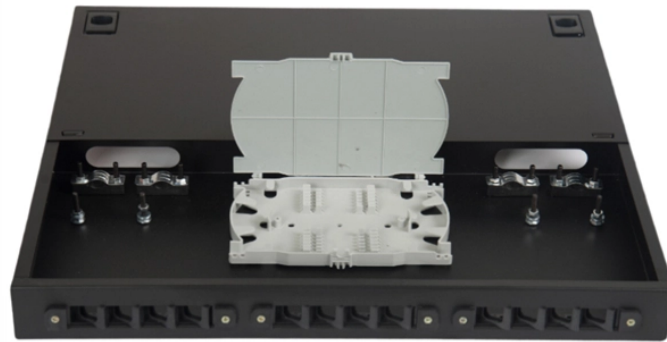


## How large is the beam splitter with an 18-beam splitter



### Overview

This beamsplitter is designed with a circular geometry, featuring a diameter of 50. Thorlabs offers a wide range of optical beamsplitters. Our plate beamsplitters have a coated front surface that determines the beam splitting ratio while the back surface is wedged and AR coated in order to minimize ghosting and interference effects. Edmund Optics offers plate, cube, pellicle, polka dot, or specialty prism Beamsplitters in a variety of anti-reflection coatings or substrates. It is a crucial part of many optical experimental and measurement systems, such as interferometers, also finding widespread application in fibre optic telecommunications. It provides an expert-curated supplier directory, buyer-focused technical background information, and structured selection criteria to support professional procurement decisions.

## How large is the beam splitter with an 18-beam splitter



An Optical Beamsplitter is an optic or optical device that is used to split a beam of light in two. Newport offers a wide variety of Beamsplitters in various shapes.



A beam splitter (or beamsplitter, power splitter) is an optical device which can split an incident light beam (e.g. a laser beam) into two (or sometimes more) beams, which may or may not have the same ...



Beam splitters with customer-specific dimensions can be manufactured on short notice. Customized beam splitters based on the existing DST coatings are typically delivered as quickly as stock ...



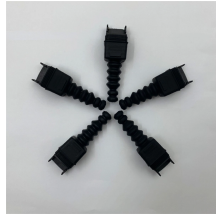
The BSN18 Dia:2in 10:90 (R:T) UVFS Plate Beamsplitter is a high-quality optical component sourced from Thorlabs. This beamsplitter is designed with a circular geometry, featuring a diameter of 50.8 ...



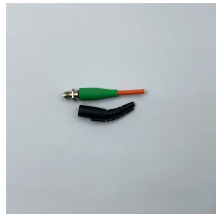
Thorlabs offers a wide range of optical beam splitters. Our plate beam splitters have a coated front surface that determines the beam splitting ratio while the back surface is wedged and AR coated in ...



Large beam size optical set up. Used in large beam size optical layouts. Used for monitoring optical systems, split beams into different wavelengths, polarizations or intensities.



Keysight's standard polarization beam splitting cubes separate the orthogonally-polarized output beams by 90° with an accuracy of five arcminutes; custom models are available with arcsecond accuracy.



Beamsplitters are optical components used to split input light into two separate parts. Beamsplitters are common components in laser or illumination systems. Beamsplitters are also ideal for fluorescence ...



A beam splitter or beamsplitter is an optical device that splits a beam of light into a transmitted and a reflected beam. It is a crucial part of many optical experimental and measurement systems, such as ...



These cube beam splitters have no beam shift and can be easily integrated with 0-degree angle of incidence. The reflected and transmitted optical path lengths are equal, and compared to other ...



Overview Designs Phase shift Classical lossless beam splitter Use in experiments Quantum mechanical description Reflection beam splitters

## Contact Us

For more information, pricing, or custom solutions, please contact us:

Website: <https://indzawo.co.za>

Email: [sales@indzawo.co.za](mailto:sales@indzawo.co.za)

Phone: +27 71 296 8473

Address: 22 Quantum Street, Midrand, 1685, Gauteng, South Africa

This document is for informational purposes only. Specifications subject to change without notice.

