

## How long is a cable tray anti-vibration bracket



### Overview

Traditionally, it has been recommended to install brackets approximately every 1 to 1.5 meters along the length of the cable tray. There are factors to consider when determining the appropriate bracket spacing for your installation. A rung spacing of 6 to 9 inches (150 to 230 mm) is preferable when the cable tray is used for instrumentation and control applications that require. One common question that arises during such installations is whether brackets need to be spaced at intervals as close as every 1 meter along the cable tray or if spacing can be increased without compromising safety and integrity. Cable trays or cable ladders can be used indoors and outdoors. Cable trays or cable ladders can be mounted both in a lengthwise and a transverse direction beneath previously installed cable sections. The pathway sections shall be provided in five widths: 8" (203mm), 12" (305mm), 18" (457mm), 24" (610mm) and 30" (762mm).

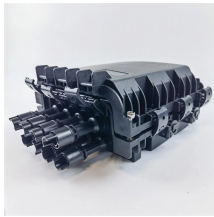
## How long is a cable tray anti-vibration bracket



The document provides specifications for various cable tray support brackets, including stand-off and cantilever types. It lists the part number, size of cable tray ...



manage copper, fiber optic, or power cables. The pathway sections shall be provided in five widths: 8" (203mm), 12" (305mm), 18" (457mm), 24" (610mm) and 30" (762mm). Optional snap-on sidewalls ...



Our cable tray design considerations guide details key factors to consider when designing cable tray systems for industrial and commercial applications. Browse or download the cable tray catalog for ...



The Easy ex EF5CK Series Seismic Cable Restraint Kits are engineered to secure suspended non-structural components—such as ductwork, piping, conduit, cable trays, and HVAC ...



Wherever a secure connection of machinery and equipment is required, we have the cable management and entry systems for you. Even in applications where ...



The design of these wire mesh cable trays is extremely user-friendly and can be ...



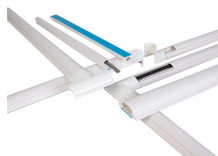
Cable tray length is selected based on the load to be supported, the distance between the supports (also referred to as the span), and handling and installation constraints.



When fitting cable trays and their accessories, the products are cut on site to create changes of direction, adjust sections, etc. Damage can also occur during handling; as a result, both the ...



For installations where cables exit the bottom of the cable tray, and the overall system is subject to vibration, it is advisable to use B-Line series Cable Channel Bushings (Cat. No. 99-1125).



It is designed for safely mounting AC units, cable trays, ductwork, and walkways on flat roofs without damaging the surface. Each kit includes two 350mm x 350mm rubber feet with a 95mm height. They ...



Cable trays or cable ladders can be mounted both in a lengthwise and a transverse direction beneath previously installed cable sections. Optional mounting in conjunction with C profile rail or U profile.



Explore the essential cable tray support spacing requirements for safe and efficient installations. Learn NEC guidelines for perforated, ladder, and wire mesh trays.



Traditionally, it has been recommended to install brackets approximately every 1 to 1.5 meters along the length of the cable tray. However, this guideline isn't set in stone. There are factors to consider when ...



The loading table below gives the recommended maximum load for each size of tray overhead hanger when used with Vantrunk cable tray and with a uniformly distributed load (UDL) onto the tray ...

## Contact Us

For more information, pricing, or custom solutions, please contact us:

Website: <https://indzawo.co.za>

Email: [sales@indzawo.co.za](mailto:sales@indzawo.co.za)

Phone: +27 71 296 8473

Address: 22 Quantum Street, Midrand, 1685, Gauteng, South Africa

This document is for informational purposes only. Specifications subject to change without notice.

