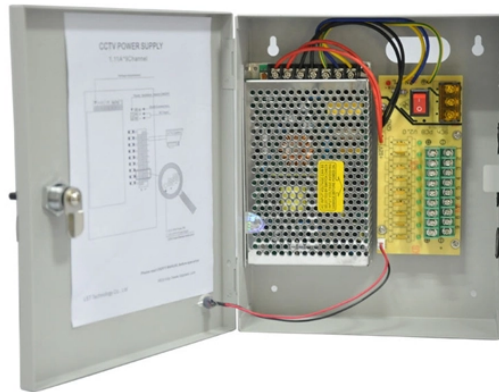


# How many cores are in a fiber optic distribution box



## Overview

Capacity: 8/12/16/24/36/48 cores standard; custom higher counts available. Adapters: LC/SC/FC/ST simplex or duplex panels; APC/UPC compatible as required. To help you choose the right solution for your FTTx deployment, we have categorized our extensive range of Fiber Distribution Boxes (FDB) based on their fiber core capacity and typical application environments. In terminal boxes and closures, core count is directly related to: Common configurations include: These configurations do not represent performance differences, but rather. Flexible Capacities: Standard options 8/12/16/24/36/48 cores; higher counts on request, with scalable splice tray stacks and interchangeable adapter plates. Installer-Friendly Layout: Hinged covers, clear port labeling, bend-radius guides, and strain-relief points accelerate on-site work and reduce. Fiber Optic Distribution Boxes (with 24-Core!) FBR-11610 Fiber-Optic Distribution Box, 24-Core is a high quality product by Bud Industries used for electronic enclosure applications.

## How many cores are in a fiber optic distribution box



OTRANS is a leading fiber optic distribution box manufacturer. We offer a wide range of 1-24 core FDB boxes and ODF cabinets for indoor/outdoor FTTX deployment. Durable, IP65 rated, and easy to ...



OTRANS is a leading fiber optic distribution box manufacturer. We offer a wide range of 1-24 core FDB boxes and ODF cabinets for indoor/outdoor FTTX deployment. ...



The CRXCabling FTTx Fiber Distribution Box (FDB) is a ruggedized fiber termination box, which can be deployed to terminate and distribute fiber up to 48 cores. Optical distribution box is a versatile and ...



This fiber optic distribution box supports up to 16 fiber cores and is suitable for wall-mounted or pole-mounted installations in both indoor and outdoor environments.



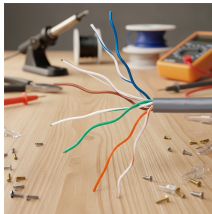
FBR-11610 Fiber-Optic Distribution Box, 24-Core is a high quality product by Bud Industries used for electronic enclosure applications.



Indoor/outdoor fiber optic distribution boxes for FTTH/FTTB. 8-48 cores, IP-rated sealing, splice trays, adapter panels (LC/SC/FC/ST), PLC splitter support, OEM/ODM, fast delivery.



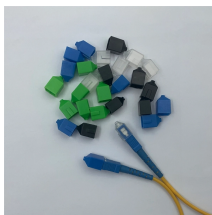
Engineering explanation of fiber core count differences in terminal boxes and how capacity affects deployment structure and scalability.



According to the capacity, fiber optic distribution box can be divided into: 4 core, 6 core, 8 core, 12 core, 16 core, 24 core, 36 core, 48 core and so on. The 8-core and 16-core are the most used.



Fiber Distribution Box Fiber distribution boxes for FTTH network termination and distribution. Wall mount, floor mount, and rack mount options with capacities from 2 to 144 cores. Ideal for residential ...



Description This distribution box terminates up to 2 fiber optic cables, offers spaces for splitters and up to 48 fusions, allocates 24 SC adapters and working under both indoor and outdoor environments. It ...



How many fiber optic cables can a distribution box accommodate? The number of fiber optic cables that a distribution box can accommodate varies depending on the size and configuration of the box.

## Contact Us

For more information, pricing, or custom solutions, please contact us:

Website: <https://indzawo.co.za>

Email: [sales@indzawo.co.za](mailto:sales@indzawo.co.za)

Phone: +27 71 296 8473

Address: 22 Quantum Street, Midrand, 1685, Gauteng, South Africa

This document is for informational purposes only. Specifications subject to change without notice.

