

## How many optical modules does an OLT device have



### Overview

An OLT (optical line terminal), also known as optical line termination, acts as the endpoint hardware device in a passive optical network. The OLT contains a central processing unit (CPU), passive optical network cards, a gateway router (GWR) and a voice gateway (VGW) uplink cards. The OLT is responsible not only for transmitting data from the core network to user terminals but also for managing bandwidth. In general, an OLT is akin to a Network Switch where each port represents one or more client ONT or a node. It aggregates multiple ONUs/ONTs through optical splitters and handles data distribution, management, and synchronization. Optical Network Termination (ONT).

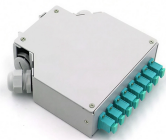
## How many optical modules does an OLT device have



In short: The OLT (Optical Line Terminal) is the central control unit of a Passive Optical Network (PON). It converts data signals, manages bandwidth, and connects hundreds of users over ...



Generally speaking, OLT equipment includes a rack, CSM (control and switching module), ELM (EPON link module, PON card), redundant protection-48V DC power module, or a ...



Q: What modules are used for GPON OLT PON ports, GE optical ports, and XGE ports? A: GE optical ports use standard 1G SFP optical modules, XGE optical ports use standard 10G SFP+ ...



Depending on the underlying fiber technology, an OLT can be EPON, GPON, XG-PON or WDM.



An OLT (optical line terminal), also known as optical line termination, acts as the endpoint hardware device in a passive optical network. The OLT contains a central processing unit (CPU), ...



It aggregates multiple ONUs/ONTs through optical splitters and handles data distribution, management, and synchronization. In simple terms, the OLT is the “brain” of the network.



OLTs with a single power supply typically require only one power module, whereas OLTs with dual power supplies are equipped with two power ...



How many ONUs can an OLT support? Depending on its configuration and optical split ratio (often 1:64 or 1:128), a single OLT port can connect dozens to hundreds of ONUs.



OLTs with a single power supply typically require only one power module, whereas OLTs with dual power supplies are equipped with two power modules to achieve power redundancy.



OLT (Optical Line Terminal), PON network consists of three parts: OLT, ODN and ONU. OLT belongs to the business node side of the access network equipment, connected to the ...



Optical Distribution Network (ODN) - The physical fibre and optical devices that distribute signals to users in a telecommunications network. The ODN is composed of passive optical ...



OLT is short for optical line terminal, which is a device used to connect optical fiber and transfer signals. OLT is the starting point for the PON, which is connected to an aggregation switch ...

## Contact Us

For more information, pricing, or custom solutions, please contact us:

Website: <https://indzawo.co.za>

Email: [sales@indzawo.co.za](mailto:sales@indzawo.co.za)

Phone: +27 71 296 8473

Address: 22 Quantum Street, Midrand, 1685, Gauteng, South Africa

This document is for informational purposes only. Specifications subject to change without notice.

