

# How much does an Italian fiber optic splice box with remote monitoring function cost



## How much does an Italian fiber optic splice box with remote monito



Fiber Optic Splice Boxes » Fiber optic splice box with front panel for 24 adaptors SC simplex, LC duplex or E2000, 19", adaptors not included



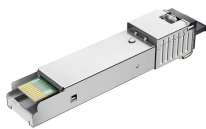
Click here if you are not automatically redirected after 5 seconds.



Find reliable splice boxes for fiber optic networks. Durable, waterproof, and available in various sizes. Perfect for FTTH and other optical communications.

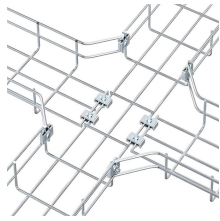


Here you will find a selection of small and bigger wall boxes for Outdoor- and/or Inhouse-Mounting and form a termination to the laying cable. Different adaptors can be installed.



Splice boxes, also known as fiber optic splice enclosures or fiber splice closures, are essential components in fiber optic networks. Their primary function is to protect and manage the spliced fiber

...



Price and other details may vary based on product size and color. Need help?



We offer a full range of fiber splice closures in various shapes, sizes, port configurations, and splice capacities to meet diverse outdoor cable connection requirements.



Discover the best assortment fiber optic enclosures and interconnect boxes. We have one of the largest inventories available. Expert tech support available to assist you. Call or check out what's available ...



Commscope | sku: TYC20177 Commscope FOSC-ACC-A/B-TRAY-12-RBN Ribbon Splice Tray MSRP: \$40.50 Now: \$37.37 Add to Cart



Fiberlink provides fiber optic splice box products for FTTH solution, including fiber terminal box, fiber splice enclosure, optical distribution box.

## Contact Us

For more information, pricing, or custom solutions, please contact us:

Website: <https://indzawo.co.za>

Email: [sales@indzawo.co.za](mailto:sales@indzawo.co.za)

Phone: +27 71 296 8473

Address: 22 Quantum Street, Midrand, 1685, Gauteng, South Africa

This document is for informational purposes only. Specifications subject to change without notice.

