

## How to configure switches in outdoor distribution boxes

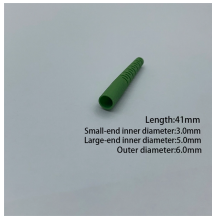


### Overview

In this video, we'll walk you through the entire process of installing outdoor electrical outlets and a weatherproof switch step by step. Whether you're adding power for outdoor lighting, holiday decorations, or backyard tools, we'll show you how to do it safely and. These time-proven, reliable switches provide no-external-arc circuit interruption of overhead distribution feeders and outdoor distribution substations S&C Alduti-Rupter Switches provide no-external-arc circuit interruption for overhead distribution feeders and outdoor distribution substations. An outdoor electrical distribution box serves as the critical junction point where incoming power lines are split into multiple branch circuits for outdoor installations, parking lots, building exteriors, and industrial facilities. Unlike standard junction boxes, these distribution systems must. Learn how to install a distribution box safely and correctly. Covers wiring, placement, standards, and expert tips for a compliant setup. Any person or persons who designs, purchases, installs, operates, or maintains new systems using these products must understand the equipment, its markings, and its. Read and understand this entire manual and any additional site-specific installation documents before attempting to assemble, install, or

operate the luminaire.

## How to configure switches in outdoor distribution boxes



View and Download Renogy PMS1280 user manual online. Distribution Box 12V/24V 80A. PMS1280 power distribution unit pdf manual download. Also for: Rshcb-c02p-g1.



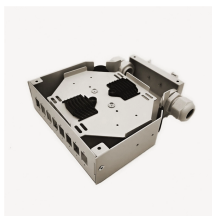
Read and understand this entire manual and any additional site-specific installation documents before attempting to assemble, install, or operate the luminaire. If you have any questions regarding the ...



In this video, we'll walk you through the entire process of installing outdoor electrical outlets and a weatherproof switch step by step.



Complete specification guide for outdoor electrical distribution boxes covering NEC Article 312 requirements, NEMA ratings, sizing calculations, and selection criteria for commercial and ...



The following instructions are to be used for the receiving, handling, storing, and installation of indoor and outdoor assemblies. It does not cover all possible contingencies, variations, and details that may ...



Used to sectionalize or isolate circuits on electrical distribution systems up through 38 kV. Provides an economical means for bypassing and disconnecting reclosers or regulators. Used as a single-phase ...



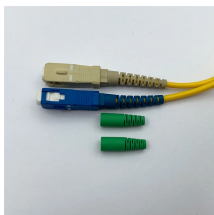
For applications where there is no need for simultaneous three-phase switching, single-pole Alduti-Rupter Switches are an excellent alternative; they're conveniently operated with a conventional ...



Please follow instructions, labeling, and applicable codes and standards for installation, maintenance, and operation of this equipment and its components. Only "Qualified Persons" should install and/or ...



In this video, we'll walk you through the entire process of installing outdoor electrical outlets and a weatherproof switch step by step.



Learn how to install a distribution box safely and correctly. Covers wiring, placement, standards, and expert tips for a compliant setup.



Install a weatherproof, switched outdoor receptacle safely. Detailed guide covers component choice, complex wiring, and code adherence.

## Contact Us

For more information, pricing, or custom solutions, please contact us:

Website: <https://indzawo.co.za>

Email: [sales@indzawo.co.za](mailto:sales@indzawo.co.za)

Phone: +27 71 296 8473

Address: 22 Quantum Street, Midrand, 1685, Gauteng, South Africa

This document is for informational purposes only. Specifications subject to change without notice.

