

## How to configure the motor distribution box



## How to configure the motor distribution box



You can check the operational status and parameters of devices connected to the distribution box through Renogy ONE Vision, Renogy ONE Core, and/or DC Home app.



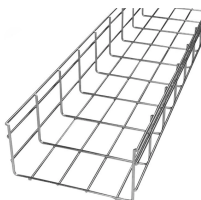
In this video, we are going to wire a power distribution box. This small box has an rccb switch that protects the outputs from electric shock and also has a miniature switch that protects the...



Here you can select the type of mounting of the small distribution board, the mains system, the desired type of connection and the need for surge protection using simple menus or selection fields.



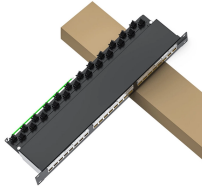
First of all, select the ratings of the MCCB and MCBs as per your load requirements. Identify the input and output terminals of the MCCB and MCBs. Connect all three phases from the ...



This article explains briefly some common configurations used in MCCs using the single-line diagram and the wiring diagram. The main MCCs' components and the pilot devices are ...



Before connection of any motors to the power distribution panel, check cable lengths and wire gauge (AWG), against this table in order to ensure system will operate to specification.



Before starting the installation, finding a proper place for putting the distribution box is crucial, because it largely decides the safety and convenience ...



Read and understand this manual in its entirety before proceeding. Failure to observe this precaution could result in personal injury or loss of life. Thoroughly inspect this equipment before accepting ...



What's the difference between a distribution box and a sub-panel? A distribution box typically refers to the main electrical panel that receives power from the utility service. A sub-panel is ...



Learn about how to wire a 3-phase motor for either low voltage or high voltage in the motor electrical junction box.



In the following, the distribution power transformer features, construction and protection and their influence to the complete distribution system performance are discussed.



The main horizontal bus provides three-phase power distribution from the incoming line or primary disconnect device to each vertical structure in the motor control center.



Learn how to install a distribution box safely and correctly. Covers wiring, placement, standards, and expert tips for a compliant setup.

## Contact Us

For more information, pricing, or custom solutions, please contact us:

Website: <https://indzawo.co.za>

Email: [sales@indzawo.co.za](mailto:sales@indzawo.co.za)

Phone: +27 71 296 8473

Address: 22 Quantum Street, Midrand, 1685, Gauteng, South Africa

This document is for informational purposes only. Specifications subject to change without notice.

