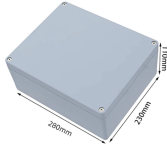


How to connect a multimode fiber to a single-mode fiber



How to connect a multimode fiber to a single-mode fiber



Converting multimode fiber to single-mode fiber can improve network performance and future-proof infrastructure. This guide will walk you through the methods, challenges, and best ...

8-Port PLC Fiber Splitter Box
12-Port SC Fiber Splitter Box
Size: 280*210*150mm
Material: ABS, PA66



Therefore, the link between buildings from the LAN to the wide-area network (WAN) needs to use single-mode fiber to extend the transmission distance. This article introduces the fiber ...



Discover the complete guide on converting multimode to single-mode fiber in communication networks. Understand the differences and learn the necessary steps.



Fiber mode conversion becomes necessary to establish connectivity between multimode and single-mode fiber cables, or to interface a multimode fiber cable with a device designed to ...

5-INCH COLOR TOUCHSCREEN
Supports various video resolutions (1080P, 720P, etc.)



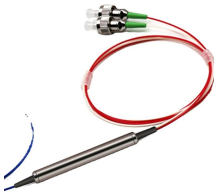
How to convert Multimode to Single-mode fiber with fiber-to-fiber media converters and transponders. Fiber mode conversion extends fiber distances, enables connectivity to legacy fiber ...



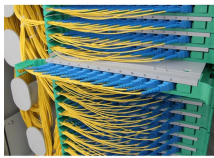
How to convert Multimode to Single-mode fiber with fiber-to-fiber media converters and transponders. Fiber mode conversion extends fiber distances, enables connectivity to legacy fiber equipment, and ...



Convert fiber between multimode and single mode using smart methods for better speed, longer distance, and reliable network performance.



This article will give you a clear explanation about the feasibility of the solutions, and introduce two relevant devices: mode conditioning cable and multimode to single-mode fiber media ...



In this tutorial, three methods will be introduced to support mode conversion from multimode to single-mode fibers. When Is Multimode to Single-Mode Conversion Required? If you must know one thing ...



In this tutorial, three methods will be introduced to support mode conversion from multimode to single-mode fibers. When Is Multimode to Single-Mode Conversion Required? There is ...

Contact Us

For more information, pricing, or custom solutions, please contact us:

Website: <https://indzawo.co.za>

Email: sales@indzawo.co.za

Phone: +27 71 296 8473

Address: 22 Quantum Street, Midrand, 1685, Gauteng, South Africa

This document is for informational purposes only. Specifications subject to change without notice.

