

## How to connect the SEEP optical module



## How to connect the SEEP optical module



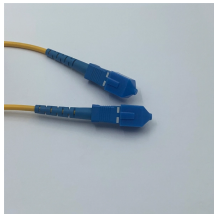
This section gives a few examples of the many kinds of problems that can be modelled using SEEP/W. Highlighted here are problems that require an analysis ...



Another point (no pun) worth doing is pre wiring the Seep on the work bench with about 200mm lengths of 16/0.2mm wire to a terminal block as its far easier to solder wires on the bench ...



To program optical power meters for the measurement, the following set of configurations should be made, normally before Step A18 of the above table. In general, these are each applied to ...



In this article, we will focus on teaching you how to troubleshoot and solve the common three categories of optical module failure. First, the transmission class of the optical module fault ...



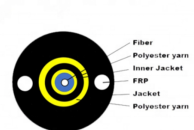
Please indicate the issue you need assistance with.  
© 2026 SWEEP OPTICAL. All Rights Reserved.



Read the installation instructions before using, installing, or connecting the system to the power source. Use the statement number at the beginning of each warning statement to locate its translation in the ...



A tutorial showing how to install SEEP solenoid point motors to your model railway layout!



This example is designed and intended to assist to new users with getting started using SEEP/W. This example is also described in the Getting Started with GeoStudio video series, "Introduction to SEEP/W".



This optical transceiver tutorial will introduce how to install SFP module, how to remove SFP module, and give some insights on the operation precautions. Following these tips will maintain ...



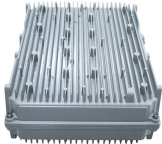
The grifo SEEP is a universal programmer for all types of serial EEPROMs in 8-pin DIL package. It programs EEPROMs with interface IIC, SPI and Microwire, and also speciality devices like digital ...



The PD shall be coordinated with the i-SEEP side when an endothermic reaction occurs from the I/F panel in the low-temperature part, or when waste heat occurs on the I/F panel in the high ...



By using the 10GbE SFP+ Card with a Express-BASE7 reference carrier board and COM Express Type 7 module (with 10GbE controller supporting optical fiber mode), customers can quickly ...



It should be noted that the connections on D & E will depend on which way around the Seep has been mounted. One way D is to the left hand rail but turn the motor around 180 degrees ...

## Contact Us

For more information, pricing, or custom solutions, please contact us:

Website: <https://indzawo.co.za>

Email: [sales@indzawo.co.za](mailto:sales@indzawo.co.za)

Phone: +27 71 296 8473

Address: 22 Quantum Street, Midrand, 1685, Gauteng, South Africa

This document is for informational purposes only. Specifications subject to change without notice.

