

## How to connect vertical supports and cable trays



## How to connect vertical supports and cable trays



General Installation Guidelines: latest NEMA standards and local building codes. Trough tray field support and frequency depends on the weight and construction (splice locations, elbow fittings, etc.) ...



This publication is intended as a practical guide for the proper and safe\* installation of cable ladder systems, cable tray systems, channel support systems and associated supports.



Each tray section should be bonded to an adjoining section using listed bonding jumpers or a continuous ground wire and clamps (such as a copper ground bolt). Powder coated tray requires the removal of ...



By contrast, a support element is constructed to support the previously described cable support lengths and fittings mechanically and to connect them to the structure, such as a room ceiling, a wall, the ...



White Cabling

Cable ladder and cable tray systems The following recommendations are intended to be a practical guide to ensure the safe and proper installation of cable ladder and cable tray systems ...



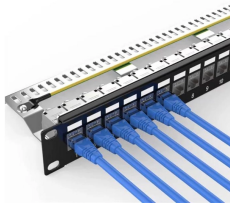
Some applications may require the cable tray to support the weight of a single, dead object in addition to the cable loads. Specifications typically require this to be applied at the midpoint of the span between ...



This guide covers the critical steps, from selecting the right electrical cable tray and performing accurate cable fill calculations to managing a safe cable pull through and ensuring all bonding and grounding ...



To ensure that the complete ladder tray wiring system performs as designed, it is important that it is properly installed. Personal injury as well as property damage will result if proper installation and ...



In designing supports for a cable tray system, consideration should be given to the loads associated with future cable additions and any additional loading that may be applied to the cable tray system (e.g., ...



WBTFORM was pioneered as the only insert to offer the flexibility to simply roll into the tray bottom, and now WBTFORM can cover both vertical sides and bottom to totally encapsulate and protect cabling ...

## Contact Us

For more information, pricing, or custom solutions, please contact us:

Website: <https://indzawo.co.za>

Email: [sales@indzawo.co.za](mailto:sales@indzawo.co.za)

Phone: +27 71 296 8473

Address: 22 Quantum Street, Midrand, 1685, Gauteng, South Africa

This document is for informational purposes only. Specifications subject to change without notice.

