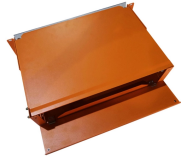


## How to install a patch panel in a mesh cable tray



## How to install a patch panel in a mesh cable tray



Learn the step-by-step network patch panel and keystone jack wiring methods, including essential tools, T568A/B wiring sequences, and tool-free installation tips.



Mastering cable tray installation is crucial for creating a safe, organised, and efficient cable management system. By following this step-by-step guide, you can ensure a seamless setup that ...



Guide to wiring Ethernet patch panels for networks. Tips on setup, wiring order, and best practices.



Our guide delivers actionable, step-by-step best practices for rack layout, cable management, and patch panel installation. Following these steps helps you build a clean and ...



This installation guide focuses on what a patch panel does, patch panel installation basics, and how to connect patch panel to switch while keeping cabling clean and easy to manage.



This blog post provides a step-by-step guide on how to dress Ethernet cables into patch panels. The post covers the following topics: preparing the cables, marking the cables, cutting the ...



**HOW TO INSTALL A PATCH PANEL FOR NETWORK CABLING** ☐☐ Are you setting up a structured network and wondering how to neatly organize your cables? The patch panel is your best friend!...



Installing the ONS 15454 M12 (ANSI and ETSI) Shelf Mesh Patch-Panel Tray Figure 76: 40-Channel Patch-Panel Tray, Side View The following figure shows the 40-channel patch-panel ports and ...



See Figure 1 and 2 to prepare the fiber cables properly. Make a mark on the outer/distribution sheath at a point "A" from the end of the cable (if there is no outer sheath, go directly to step 4) for distribution ...



This document explains how to install and operate the Cisco ONS 15454-PP-4-SMR patch panel. The Cisco ONS 15454-PP-4-SMR patch panel interconnects 40-SMR2-C cards in a mesh node.

## Contact Us

For more information, pricing, or custom solutions, please contact us:

Website: <https://indzawo.co.za>

Email: [sales@indzawo.co.za](mailto:sales@indzawo.co.za)

Phone: +27 71 296 8473

Address: 22 Quantum Street, Midrand, 1685, Gauteng, South Africa

This document is for informational purposes only. Specifications subject to change without notice.

