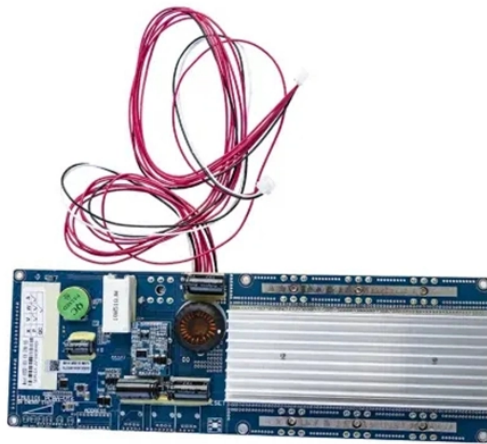


How to install aluminum cover plates for cable trays



How to install aluminum cover plates for cable trays



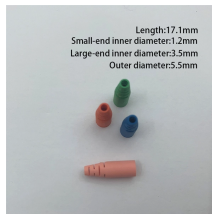
Cable tray length is selected based on the load to be supported, the distance between the supports (also referred to as the span), and handling and installation constraints.



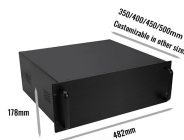
The Cable Tray Institute is making available the current edition of this practical guide for the proper installation of aluminum or steel cable tray systems. These guidelines will be useful to engineers, ...



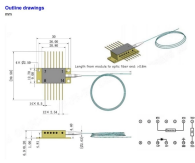
This Installation guide covers the most popular and standard installation questions that may come up. If you have any further questions, please contact our sales team at 888-4WB TRAY for assistance.



In this article, we will discuss key steps, from preparation to the installation process, to ensure that your cable tray covers stay secure, long-lasting, and perform their intended function ...



Installing a cable tray system requires careful planning to ensure it can support the weight of the cables and adheres to electrical safety codes. Here is a step-by-step guide on how to install a ...



It describes inspecting and storing cable trays upon receipt, installing trays flat or vertically, fixing trays to structures, designing trays to carry loads, providing covers in areas with risk of damage, allowing ...



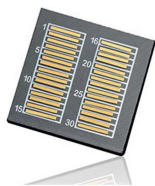
This guide covers the critical steps, from selecting the right electrical cable tray and performing accurate cable fill calculations to managing a safe cable pull through and ensuring all bonding and grounding ...



Per NEMA V2, installing cover on outdoor cable tray systems is not common practice. Should they be required, proper attachment is required to protect them from the force of the wind.



This section starts out covering areas where cable tray cannot be installed and then covers the basic tools required for cable tray installation. From here it goes into the many types of supports and ...



NEMA VE 2-2018 Cable Tray Installation Guidelines. Learn best practices for cable tray installation, support, and accessories.

Contact Us

For more information, pricing, or custom solutions, please contact us:

Website: <https://indzawo.co.za>

Email: sales@indzawo.co.za

Phone: +27 71 296 8473

Address: 22 Quantum Street, Midrand, 1685, Gauteng, South Africa

This document is for informational purposes only. Specifications subject to change without notice.

