

## How to install right-angle elbows on cable trays and their prices



### Overview

Use this guide to learn the most effective installation practices when installing Cablofil tray. Creating a 90-degree elbow in an electrical cable tray, often called a "fabricated" or "mitered" bend, involves cutting, bending, and fastening a straight section of tray. The most common method involves creating two 45-degree cuts to form a 90-degree angle. When a wire cable tray is cut, the fact that a. A range of nearly twenty fittings makes the system customizable, accommodating any kind of tricky configuration. Users can achieve design flexibility with numerous sizes of horizontal and vertical elbows, adjustable elbows, cross pieces, tees, reducers, and branches. Atkore customer service experts. The 90° Horizontal Elbow provides essential support and enables seamless cable management throughout your cable routing system. Standard 12", 24" and 36" radius are available for all fittings.

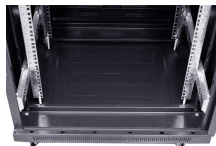
## How to install right-angle elbows on cable trays and their prices



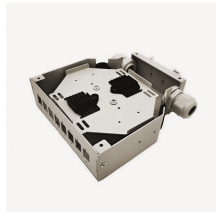
These cable tray fittings and accessories are essential for the seamless installation of an integrated cable management system, allowing for functions such as widening, heightening, connecting, and ...



Guide for making bends, tees, crosses, risers and reducers from straight sections of wire basket cable trays live at the project.



The document provides instructions for forming various bends and joints in electrical trunking and cable trays. It describes: 1) How to mark and cut a right-angle internal bend in a section of trunking, ...



A range of nearly twenty fittings makes the system customizable, accommodating any kind of tricky configuration. Users can achieve design flexibility with numerous sizes of horizontal and vertical ...



The document provides instructions for forming various bends and joints in electrical trunking and cable trays. It describes: 1) How to mark and cut a right-angle ...



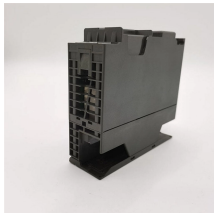
These fittings help in maintaining support of the cable tray system. Shop Graybar's collection of cable tray and fittings to find exactly what works for your job.



Use this guide to learn the most effective installation practices when installing Cablofil tray. Each example of bends and tee's clearly illustrate proper tray cutting combined with recommended usage ...



The aluminum I-beam design of ITray is perfect for industrial installations with large diameter cables in long span situations, minimizing total tray width and creating a smooth transition between straight ...



Discover our 90° Horizontal Elbow for cable tray systems. Contact us today for availabilities and receive a quote. Fast shipping guaranteed.



Creating a 90-degree elbow in an electrical cable tray, often called a "fabricated" or "mitered" bend, involves cutting, bending, and fastening a straight section of tray.

## Contact Us

For more information, pricing, or custom solutions, please contact us:

Website: <https://indzawo.co.za>

Email: [sales@indzawo.co.za](mailto:sales@indzawo.co.za)

Phone: +27 71 296 8473

Address: 22 Quantum Street, Midrand, 1685, Gauteng, South Africa

This document is for informational purposes only. Specifications subject to change without notice.

