

How to install the distribution box shielding bracket



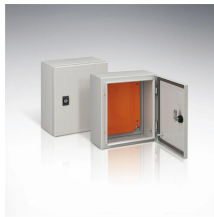
Overview

Many engineers don't know how to install this accessory. Determine the right height and the quantity of mounting bracket needed 2. Fix it on the gland plate Also the. Learn how to wire a distribution box step by step! This video shows real on-site footage of electrical installation, demonstrating safe and standardized wiring methods used by professionals. For example, the key combination ^D or Ctrl-D means that you hold down the Control key while you press the D key. (Keys are indicated in capital letters but are not case sensitive. This article details the process of installing them, which helps you comprehend distribution boxes.

How to install the distribution box shielding bracket



Learn how to wire a distribution box step by step! This video shows real on-site footage of electrical installation, demonstrating safe and standardized wiring methods used by...



How to install and utilize the pipe seals that come with the Polylok distribution boxes.



Because the Adjust-A-Box and Adjustable Low Voltage Bracket can be easily removed, they can be easily upgraded from a 1-gang to a 2-gang box or bracket, which have a knockout clamp.



This article provides a detailed overview of the entire process of installing a distribution box, from pre-installation preparation to post-installation maintenance, and summarizes common ...



Before you work on any equipment, be aware of the hazards involved with electrical circuitry and be familiar with standard practices for preventing accidents. Read the installation instructions before ...



First of all, you need to have a simple understanding of the definition of a distribution box, and make it clear which kind of distribution box you want to install. This is important to properly install it.



All the components, wires and connections are under the protective cover due to the same height, therefore, it is safer to use. What's more, it is welding-free and suitable for all electrical ...



Read the installation instructions before using, installing, or connecting the system to the power source. Use the statement number at the beginning of each warning statement to locate its translation in the ...



Another innovative solution for Wire and Cable Management Quick and easy to install, the Iberville® BCBK-01 adjustable support bracket eliminates the need to build extra supports on site.



Read the installation instructions in this document before you connect the system to its power source. Failure to read and follow these guidelines could lead to an unsuccessful installation and possibly ...



The DIN rail bracket mounts in two different ways, depending on the orientation you wish to use. See Figure 4 for vertical orientation, and Figure 5 for horizontal orientation.

Contact Us

For more information, pricing, or custom solutions, please contact us:

Website: <https://indzawo.co.za>

Email: sales@indzawo.co.za

Phone: +27 71 296 8473

Address: 22 Quantum Street, Midrand, 1685, Gauteng, South Africa

This document is for informational purposes only. Specifications subject to change without notice.

