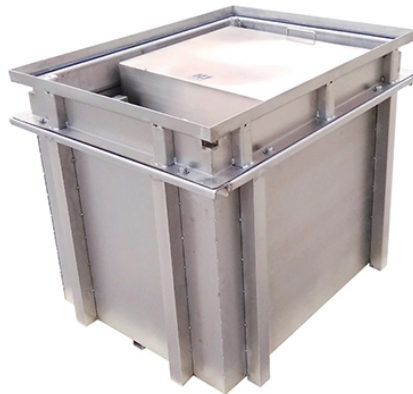


How to number and label distribution boxes



Overview

This standard describes requirements for numbering and labeling of real property electrical distribution equipment, circuits, and site lighting at Lawrence Livermore National Laboratory. Look at this table to see how good labeling and safety features help: Knowing your distribution box helps you see which breaker does what. This makes fixing problems faster and keeps you safe. This is an internal LLNL standard meant to guide the design of new facilities, facility modifications, and. Every home relies on a breaker box (also called a service panel or distribution board) to manage and protect its electrical circuits. Yet, one of the most overlooked steps in electrical safety and convenience is correctly labeling each circuit breaker. You need to label every circuit breaker clearly and accurately to meet National Electrical Code (NEC).

How to number and label distribution boxes



Proper electrical panel labeling is a critical safety requirement that helps prevent electrical accidents, ensures code compliance, and enables quick circuit identification during emergencies.



Learn electrical panel labeling standards, requirements & best ways to label an electrical panel for safety, compliance, and easy identification.



A Box Plot is also known as a Box and Whisker Plot and it is a graphical tool used to understand the distribution of numerical data. It shows the median, quartiles and possible outliers in ...



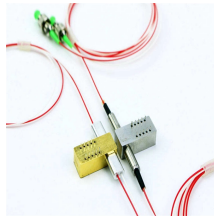
Distribution bucket positions are assigned numbers from top to bottom based upon the smallest available bucket size. This method results in a number/letter grid position for each possible bucket ...



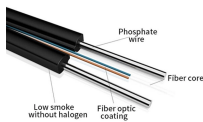
Proper electrical panel labeling is a critical safety requirement that helps prevent electrical accidents, ensures code compliance, and enables quick ...



Understand your distribution box labels to identify circuits, improve safety, and troubleshoot electrical issues in your home with confidence.



In descriptive statistics, a box plot or boxplot (also known as a box and whisker plot) is a type of chart often used in explanatory data analysis. Box plots visually show the distribution of ...



Here is how to do it in six easy steps. The panel is usually located in the basement, garage, utility room, or closet. It's a metal gray box with a removable cover and many labeled circuit ...



Master breaker box labeling for safer electrical systems. Follow our expert step-by-step guide for efficient troubleshooting and maintenance.



One essential aspect of electrical safety is the proper labeling of industrial electrical and control panels. Proper labeling not only helps prevent accidents but also ensures compliance with different safety ...



The following reviewed stickers and labels are designed for durability, readability, and easy application on breaker boxes, distribution panels, and load centers.

Contact Us

For more information, pricing, or custom solutions, please contact us:

Website: <https://indzawo.co.za>

Email: sales@indzawo.co.za

Phone: +27 71 296 8473

Address: 22 Quantum Street, Midrand, 1685, Gauteng, South Africa

This document is for informational purposes only. Specifications subject to change without notice.

