

## How to remove the optical fiber from the optical module



### Overview

Release the locking clip on the fiber connector, gently push the fiber connector inward, and then pull out the optical fiber. After removing the optical fibers from the optical module, cover the connectors with dust caps. Small Form-factor Pluggable modules (SFP module) are the workhorses of modern network connectivity, enabling flexible fiber optic or copper links between switches, routers, firewalls, and servers. Since the optical module itself is relatively compact and fragile, any irregular operation may cause hidden damage or even permanent failure of the optical module hardware. This article will tell you how to install and remove the SFP transceiver. Preparation Before Installation 1. However, you might need to refer to the datasheet or user manual of any new transceivers to familiarize yourself with their properties and the latching mechanism.

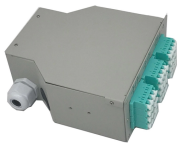
## How to remove the optical fiber from the optical module



Pull out the optical module in the horizontal direction (please use even force when pulling out to avoid damaging the handle), and cover the optical module slot with a dust-proof cap.



Release the locking clip on the fiber connector, gently push the fiber connector inward, and then pull out the optical fiber. After removing the optical fibers from the optical module, cover the connectors with ...



When using the SFP module, you need to follow the correct steps strictly. The wrong operation will reduce the service life of the modules. This article will tell you how to install and remove the SFP ...



Ensure that you clean the optic surfaces of the fiber cables before you plug them back into the optical ports of another SFP module. Avoid getting dust and other contaminants into the optical ports of your ...



The correct way is to first unlink the optical module and the optical cable, and then connect the optical module. After removing the fiber jumper, insert a clean dust cover over it to ...



To safely remove an SFP module, follow these steps: Disable the port in your network device settings or power off the device to avoid electrical damage. Disconnect the optical cable. ...



Removing and inserting an SFP module can shorten its service life. Therefore, you should not remove or insert SFP modules unless it is absolutely necessary. Disconnect all the cables before ...



In this quick video we show how to properly insert and remove an SFP optical transceiver, including how to release the latch and handle the module safely.



Only after the module is fully seated and secured, remove the dust caps from the module's optical bore (s) and from your fiber optic cable connector (s). Immediately clean the fiber connector ...



Master the art of effortless SFP installation and removal with our comprehensive guide. Explore the general rules, essential preparation, and step-by-step procedures to ensure flawless ...

## Contact Us

For more information, pricing, or custom solutions, please contact us:

Website: <https://indzawo.co.za>

Email: [sales@indzawo.co.za](mailto:sales@indzawo.co.za)

Phone: +27 71 296 8473

Address: 22 Quantum Street, Midrand, 1685, Gauteng, South Africa

This document is for informational purposes only. Specifications subject to change without notice.

