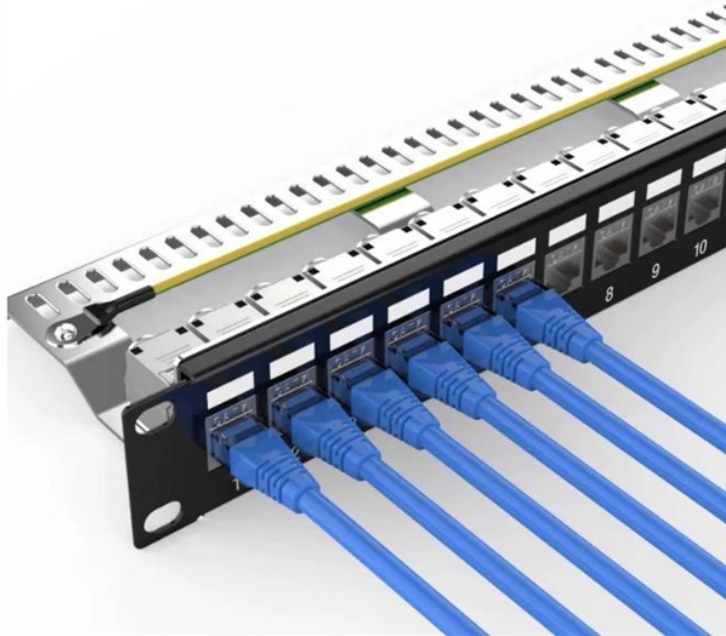


How to use a push-in type beam splitter



Overview

This interactive tutorial explores transmission and reflection of a light beam by three common beamsplitter designs. One beam is typically reflected while the other is transmitted. Types of Beam Splitters: Cube Beam. A beamsplitter is a common optical component that partially transmits and partially reflects an incident light beam, usually in unequal proportions. It provides an expert-curated supplier directory, buyer-focused technical background information, and structured selection criteria to support professional procurement decisions. Plate beamsplitter s Plate beamsplitters consist.



How to use a push-in type beam splitter



A beam splitter or beamsplitter is an optical device that splits a beam of light into a transmitted and a reflected beam. It is a crucial part of many optical experimental and measurement systems, such as ...



With the large variety of beamsplitters available, the designer needs to take many factors into consideration. This article and its illustrations will go a long way toward making the correct choice ...



Looking for sentences and phrases with the word use? Here are some examples. An example is the use in military affairs of an ancient enough science, heuristics. If using lemon juice, pomegranate ...



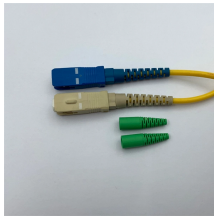
Learn how and when to use semicolons (;), colons (:), commas (,), and dashes (-) to make your writing more effective.



The top splitter is the TwinCam, using a single mirror splitter to allow up to two cameras on one microscope port. The bottom splitter is the MultiCam, using two mirror splitters to allow up to four ...



While both terms refer to the act of employing something for a purpose or function, use is more general and straightforward, whereas utilize implies a more strategic or efficient use of resources or ...



In addition to the task of dividing light, beamsplitters can be employed to recombine two separate light beams or images into a single path. This interactive tutorial explores transmission and reflection of a ...



The meaning of USE is to put into action or service : avail oneself of : employ —often used with for; often followed by to + a verb. How to use use in a sentence.



USE definition: 1. to put something such as a tool, skill, or building to a particular purpose: 2. to reduce the.... Learn more.



Overview Designs Phase shift Classical lossless beam splitter Use in experiments Quantum mechanical description Reflection beam splitters



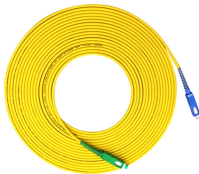
In optical communication networks, optical splitters play a crucial role in efficiently dividing and distributing signals. Proper placement and usage are essential for optimizing signal ...



A beam splitter is an optical device that divides an incoming light beam into two separate beams. One beam is typically reflected while the other is transmitted.



Polarizing beamsplitters are designed to split light into reflected S-polarized and transmitted P-polarized beams. They can be used to split unpolarized light at a 50/50 ratio, or for polarization separation ...



As a noun use means "purpose." As a verb, use means either "put to work," or "work something until there isn't anything left," unless you use your friend, meaning you exploit her.



Once the preferred construction type has been identified based on power handling and tolerance to beam displacement, the next step is to narrow the search based on how the beamsplitter needs to ...



Beam splitters are devices for splitting a laser beam into two or more beams. There are different types, including polarizing and non-polarizing versions.



You can use a colon to draw attention to many things in your writing. The categories listed below often overlap, so don't worry too much about whether your intended use of the colon fits one category ...



Explore the definition of the word "use," as well as its versatile usage, synonyms, examples, etymology, and more.



Find 188 different ways to say USE, along with antonyms, related words, and example sentences at Thesaurus .



Learn how to effectively use a beamsplitter cube. Explore applications, setup tips, and enhanced light manipulation.

Contact Us

For more information, pricing, or custom solutions, please contact us:

Website: <https://indzawo.co.za>

Email: sales@indzawo.co.za

Phone: +27 71 296 8473

Address: 22 Quantum Street, Midrand, 1685, Gauteng, South Africa

This document is for informational purposes only. Specifications subject to change without notice.

