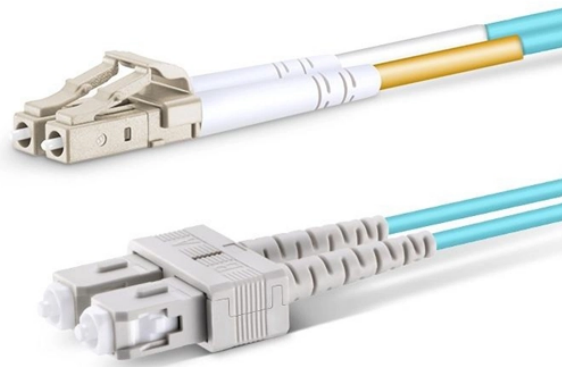


How to wire a temporary distribution box



How to wire a temporary distribution box



Learn how to wire a distribution box step by step! This video shows real on-site footage of electrical installation, demonstrating safe and standardized wiring methods used by...



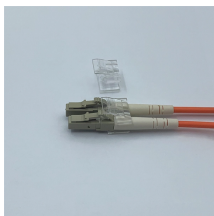
Place cover/receptacle assembly onto rubber box in position as shown in diagram. Use (6) mounting screws provided to fasten cover assembly to rubber box. DO NOT overtighten mounting screws. ...



A temporary power distribution box (TPDB), often called a spider box, functions as a portable electrical hub that centralizes and protects power distribution on a job site. This device ...



When connecting to a 3-Phase 5-Wire System, a temporary power distribution box must be utilized (6606GUSF-256 for example) to connect the 2 hots and neutral legs properly, then the box will ...



Get the power you need with Southwire's high-quality temporary power distribution boxes.



Learn how to install a distribution box safely and correctly. Covers wiring, placement, standards, and expert tips for a compliant setup.



Learn how to wire a temporary power pole with a detailed wiring diagram for easy installation and setup.



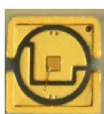
Nearly one in two new homes built in the United States contains our wire, and we produce half of the cable used to transmit and distribute electricity throughout the nation.



In this video, we are going to wire a power distribution box. This small box has an rccb switch that protects the outputs from electric shock and also has a miniature switch that protects the...



These installation and operating instructions apply to the following SPIDER II temporary power branch distribution system components. Do not discard these instructions, save for future reference.



Prepare a plan/sketch showing the location(s) of where the temporary generator will be installed (a reduced copy of the building floor or site plan may be used for this purpose).



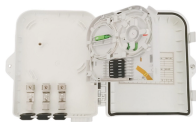
Securely manage job site power. Build a compliant temporary distribution box, detailing component sizing, critical grounding, and wiring integrity.



Power Tech®'s Temporary Power Distribution Box is used by contractors on jobsites (indoor or outdoor) to provide and distribute power from temporary power poles or jobsite generators.



NEC Article 305 — “Temporary Wiring” hard cable (Type NM) is designed for dry locations. It should not be used where exposed to moisture either indoors or outdoors. For outdoor use and indoors in damp ...



Have you ever been frustrated by a lack of power available at your job sites? Look no further than this custom designed Temp Power Box to handle all your needs. Including a parts list to ...

Contact Us

For more information, pricing, or custom solutions, please contact us:

Website: <https://indzawo.co.za>

Email: sales@indzawo.co.za

Phone: +27 71 296 8473

Address: 22 Quantum Street, Midrand, 1685, Gauteng, South Africa

This document is for informational purposes only. Specifications subject to change without notice.

