

# Huawei 6 Gigabit Single-Mode Optical Module



## Overview

The Huawei eSFP (S)-1310nm-1000Base-LX from Wassalat is a high-performance Gigabit Ethernet SFP (Mini-GBIC) transceiver module designed for single-mode fiber networks. This 02313URF is 100% genuine Huawei product. It won't have any compatibility problem with your Huawei devices. Buy it now and enjoy risk free. Optical fibers are used for carrying signals on Gigabit networks or networks with higher packet rates. is a professional engaged in computer network communications industry sales of high-tech enterprises is a leading domestic focus on optical fiber communications, security monitoring, integrated wiring equipment development manufacturing and sales. Our AI beta will help you find out quickly. Inaccurate specs?

Let us know Feedback for Huawei H3C optical module SFP-GE-LX-SM1310-A Gigabit single-mode 10km optical fiber module Inaccurate specs?

Let us know Feedback Please contact the Seller directly for warranty information.

## Huawei 6 Gigabit Single-Mode Optical Module



The Huawei Optical Transceiver, eSFP, GE, BIDI Single-mode Module (TX1310/RX1490,10 km, LC) is guaranteed 100% Compatible and Functional in its intended equipments.



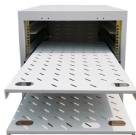
This genuine Huawei SFP module ensures seamless compatibility, low power consumption, and high reliability, making it the perfect choice for professional fiber networking applications.



Buy for Huawei H3C optical module SFP-GE-LX-SM1310-A Gigabit single-mode 10km optical fiber module with fast shipping and top-rated customer service. Once you know, you Newegg!



The Huawei SFP-GE-LX-SM1310 is an optical transceiver module that uses single-mode fiber with a center wavelength of 1310nm for transmission over distances up to 10km. It has an LC connector and ...



SFP-GE-LX-SM1310, Huawei Optical Transceiver, SFP, GE, Single-mode Module (1,310 nm,10 km, LC)



This 02313URF is 100% genuine Huawei product. It won't have any compatibility problem with your Huawei devices. And the Huawei 02313URF SFP-GE-LX-SM1310 Optical Transceiver, eSFP, GE, ...



The Huawei SFP GE LX SM1310 02315200 Optical Transceiver is a high performance, small form factor pluggable (SFP) transceiver module designed for use in Huawei networking equipment.



Original HW 6G-1310nm-2km-SM-SFP+ optical modules offer 6 Gbit/s rate, single-mode fiber, and 2km transmission distance. Perfect for telecom and data centers. | Alibaba



To ensure the normal transmission of optical signals, do not use single-mode optical fibers to connect multi-mode optical modules, nor multi-mode optical fibers to connect single-mode optical modules.



2026 enterprise network upgrade season: gigabit optical modules in stock now! huawei/h3c/cisco compatible, industrial grade, low power consumption, multimode/singlemode options available. enjoy ...



The Huawei SFP GE LX SM1310 02315200 Optical Transceiver is a high performance, small form factor pluggable (SFP) transceiver module designed for use in Huawei networking equipment.

## Contact Us

For more information, pricing, or custom solutions, please contact us:

Website: <https://indzawo.co.za>

Email: [sales@indzawo.co.za](mailto:sales@indzawo.co.za)

Phone: +27 71 296 8473

Address: 22 Quantum Street, Midrand, 1685, Gauteng, South Africa

This document is for informational purposes only. Specifications subject to change without notice.

