

## Huawei Optical Module Single-Mode 1550

**More products**

OUTDOOR CABINET



FTTX SOLUTION



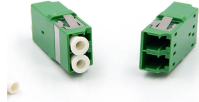
DATA CENTER



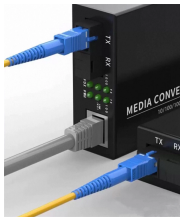
h optics.en.alibaba.com



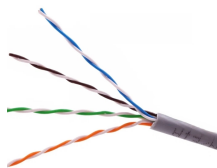
## Huawei Optical Module Single-Mode 1550



You can use different levels of 1.25 Gbit/s SFP/eSFP optical modules with GE interfaces and 10 GE interfaces. The wavelength of common 1.25 Gbit/s SFP/eSFP optical modules can be 850 ...



Huawei SFP-10G-ZR 10GBase optical transceiver for single-mode fiber, 1550nm wavelength, 80km reach. Ideal for high-speed networking.



Single-mode optical modules are used with single-mode fibers. Single-mode fibers support a wide band and large transmission capacity, and are used for long-distance transmission.



The Huawei S-SFP-GE-LH40-SM1550 is a single-mode 1.25G SFP module with a wavelength of 1550nm and two LC connectors for connections up to a distance of 40km. The LC connectors in the ...



The Huawei eSFP-FE-LX-SM1550 Single-Fiber-Bidirectional Module is a high-performance, cost-effective solution designed for long-distance optical fiber ...



This module is designed for single mode fiber and operates at the wavelength of 1550 nm. The transmitter section uses a 1550nm EML, which is class 1 laser compliant according to International ...



High quality 02310CNF OSX040N01, Optical Module - SFP+-10G-Single Mode Module (1550nm, 40km, LC) from China, China's leading Huawei Optical Transceiver product, with strict quality control ...



High quality 40km SMF 1550nm Huawei SFP Module SFP-GE-LH40-SM-1550-BIDI 100Base Single-mode Module from China, China's leading product market huawei sfp transceiver product, with strict ...



The Huawei eSFP-FE-LX-SM1550 Single-Fiber-Bidirectional Module is a high-performance, cost-effective solution designed for long-distance optical fiber communication.



Huawei S-SFP-GE-LH40-SM1550 compatible optical transceiver is a dual fiber 1000Mbps Small Form-factor Pluggable SFP module for use in 1000BASE Ethernet network. SFP EX provides 1Gb/s ...



Huawei SFP-10G-ZR 10GBase optical transceiver for single-mode fiber, 1550nm ...



QSFPs has the Huawei Compatible transceiver module S-SFP-GE-LH40-SM1550 in stock and ready to ship. We can ship them out in 24 hours after we get your order.

## Contact Us

For more information, pricing, or custom solutions, please contact us:

Website: <https://indzawo.co.za>

Email: [sales@indzawo.co.za](mailto:sales@indzawo.co.za)

Phone: +27 71 296 8473

Address: 22 Quantum Street, Midrand, 1685, Gauteng, South Africa

This document is for informational purposes only. Specifications subject to change without notice.

