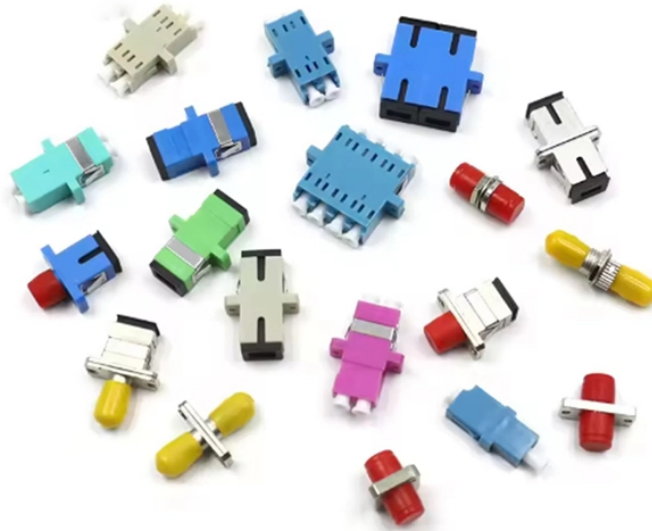


## Huawei Router Access Switch



### Overview

This article will provide a detailed guide on how to configure a Huawei HG8145V5 as a wired switch and wireless access point, making it a secondary router for a Huawei WiFi AX3. Huawei's comprehensive portfolio of products and solutions enables you to realize smooth digital transformation and rapid growth of virtualization, Big Data, and cloud services. Huawei switches already help customers achieve success in industries such as finance, Internet, retail, education. CloudEngine S5731-H builds on Huawei's unified Versatile Routing Platform (VRP) and boasts various IDN features. CloudEngine S5732-H series switches offer enhanced gigabit connectivity, simple convergence of wired and wireless networks and free mobility to create a multi-purpose network through. Huawei S300 series Ethernet switches based on cutting-edge hardware and Huawei Versatile Routing Platform (VRP) software, the S300 supports Energy Efficient Ethernet (EEE) and iStack. The S300 can be used in extensive enterprise network scenarios. "Campus Networks Typical Configuration Examples" provides typical campus network networking modes and a variety of deployment examples.

## Huawei Router Access Switch



For small- to medium-sized businesses and Internet cafes, the energy-saving Ethernet access switches with rich service features are easy to install and maintain.



Learn how to use the Huawei HG8145V5 as a wired switch and wireless access point, extending your network's capabilities. This guide takes you through each step to configure the ...



With multiple industry-leading intellectual properties and patents, Huawei provides more than a hundred switch models in more than 10 series, including access, aggregation, and core switching.



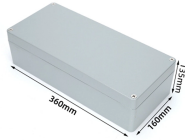
This document provides typical configuration examples for interoperation between Huawei switches and mainstream IP phones, firewalls, routers, Microsoft NLB servers, multi-NIC servers, Cisco switches, ...



It is required that users access the Internet through the Layer 3 switch and router and that the Layer 3 switch function as the gateway of users. Figure 3-327 Configuring a Layer 3 switch to work with a ...



Huawei S1700 series switches are ideal for small to medium-sized businesses, Internet cafes, hotels, schools, and others. They are easy to install and maintain and provide rich services, helping ...



The array of Huawei access points, hubs, and switches featured in this guide offers top-notch performance and cutting-edge technology to meet diverse networking needs.



Huawei switches already help customers achieve success in industries such as finance, Internet, retail, education, manufacturing, and public services. And with solutions rated as Challenger and Visionary ...



The S300 collects and maintains information about access users, such as IP addresses, MAC addresses, IP address leases, VLAN IDs, and access interfaces in a DHCP snooping binding table. ...



Thunder link offers various models of Huawei Ethernet switches and network switches, including the S5720, S6720, S6730, CE6800 and CE12800, designed for data centers and campus networks. ...

## Contact Us

For more information, pricing, or custom solutions, please contact us:

Website: <https://indzawo.co.za>

Email: [sales@indzawo.co.za](mailto:sales@indzawo.co.za)

Phone: +27 71 296 8473

Address: 22 Quantum Street, Midrand, 1685, Gauteng, South Africa

This document is for informational purposes only. Specifications subject to change without notice.

