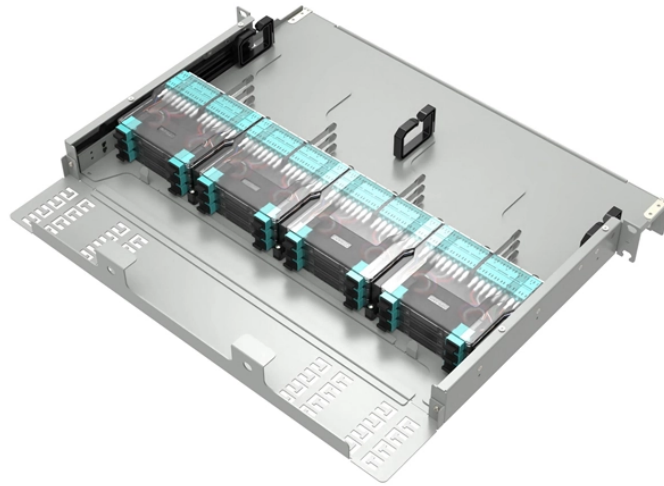


Indoor optical cable ODF fiber optic line installation diagram



Indoor optical cable ODF fiber optic line installation diagram



This chapter focuses on the testing, verification, and documentation of optical fiber cabling systems for new installation and system upgrades, with special emphasis on multimode fiber cabling for SANs.



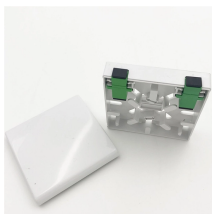
This document describes an indoor FTTH rack mounted optical fiber distribution frame. It can integrate fiber splicing, termination, adapters and connectors in a ...



The objective of this document is to be an optical fibre cable installation and laying guide, addressed to new installers, also being useful as a reminder to experienced installers.



The following contains information on the placement of fiber optic cables in various indoor and outdoor environments. In general, fiber optic cable can be installed with many of the same techniques used ...



The information contained in this manual should serve as a guide to proper handling, installing, testing, and for troubleshooting problems with fiber optic cables.



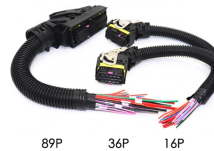
A typical fiber optic connector is 0.5 in (1.25 cm) in diameter, has a pull-of rating of 15 lb (6.8 kg) or less, and must be protected during cable installation.



Installation is similar to installing a messenger wire except it also includes a fiber optic cable that requires careful handling like any other fiber optic cable.



General This instruction describes the installation of the Fiber Distribution Frame (FDF) manufactured by Corning Optical Communications. To order accessories that are purchased separately, contact ...



Have any questions? Talk with us directly using LiveChat.



You'll need an ODF rack, some installation tools such as a Wrench, sleeve, and screwdriver, fiber optic cleaning supplies such as alcohol wipes and non-woven fabrics, patch cord ...

Contact Us

For more information, pricing, or custom solutions, please contact us:

Website: <https://indzawo.co.za>

Email: sales@indzawo.co.za

Phone: +27 71 296 8473

Address: 22 Quantum Street, Midrand, 1685, Gauteng, South Africa

This document is for informational purposes only. Specifications subject to change without notice.

