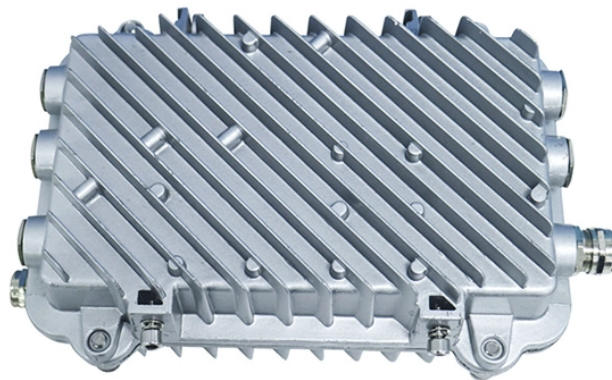


Industrial Core Switch with 24 Ethernet Ports



Industrial Core Switch with 24 Ethernet Ports



IES5024 series are 24-port 100M layer 2 managed industrial Ethernet switches. This series include multi types of products and provide full 100M copper ports, 100M fiber/copper ports, supports single/dual ...



The IE5100-24TF features 24x 10/100/1000BASE-T copper ports, 4x 100/1000BASE-X SFP ports in a 1U case, which is designed especially for industrial applications. Equipped with an IP40 rated metal ...



L2+ managed industrial Ethernet switch with 24*10/100/1000M RJ45 ports. It can support dual DC power supply input and DIN Rail mounting.



This Ruggedized Managed Industrial Ethernet Switch includes twenty-four (24) SFP Slot 100/100 Ports, four (4) 10/100/1000 Copper Ethernet (RJ45) Ports, and four (4) 1G/10G SFP+ Uplink Ports (for 32 ...



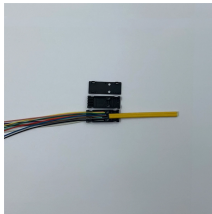
The N-Tron NT24k managed Ethernet switch connects industrial operations to data reliably and efficiently. It provides an industry-ready way to move data across industrial networks.



Yes, we recommend the IES5100-24TF, which comes equipped with 24 x 10/100/1000Base-T RJ45 ports and 4 x 100/1000Base-X SFP fiber ports, fully satisfying your requirements for port count and ...



This hardened Ethernet switch integrates 24x 10/100/1000Base-T ports with full IEEE 802.3at PoE+ support, providing up to 30W per port to power a wide range of devices such as IP cameras, wireless ...



TRENDnet's TI-PG262 is a 24-Port DIN-Rail Ethernet switch featuring 16 Gigabit PoE+ ports, 8 Gigabit ports, and 2 SFP slots. It also features a full PoE+ power budget, up to 30W per port.

Rear of the optical fiber distribution box



Come-Star offers high-performance 24-port rugged Ethernet switches, designed specifically for industrial environments that require reliable and robust networking solutions.



The Comnet CNGE24FX12TX12MS is a fully managed industrial Ethernet switch featuring twelve 100/1000BASE-FX SFP* ports and twelve 10/100/1000BASE-TX ports. All SFP ports support Comnet ...

Contact Us

For more information, pricing, or custom solutions, please contact us:

Website: <https://indzawo.co.za>

Email: sales@indzawo.co.za

Phone: +27 71 296 8473

Address: 22 Quantum Street, Midrand, 1685, Gauteng, South Africa

This document is for informational purposes only. Specifications subject to change without notice.

