

# **Industrial Ethernet Switch BX5025s**



## Industrial Ethernet Switch BX5025s



Industrial Ethernet switches offer Gigabit transmission speeds, various connection options, and are built to withstand extreme conditions including drastic temperature changes, electrical interference, and ...



Compatible with EtherNet/IP and PROFINET industrial network protocols, Unmanaged Ethernet Switches enable fast and simple “plug and play” network upgrades and are available in IP67-rated ...



Our switches are built for high network flexibility, cyber security and durability and are suitable for use in mission-critical environments.



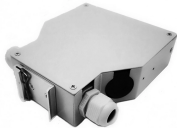
Moxa provides a wide range of industrial Ethernet switches that feature industrial-grade reliability, network redundancy, strengthened security, easy management, and competitive price-to ...



Maple Systems industrial ethernet network switches are built with industrial grade components, tested in-house, and certified for reliable operation in harsh environmental conditions.



Unmanaged industrial Ethernet switches provide low-cost network connections with options supporting 10/100/1000BaseT, PoE++ capability, IP67 M12 connections, and fiber optic ports.



Rugged Industrial Ethernet Switches with PoE, 5-10 ports, 10/100/1000Base-T and fiber support. Built to withstand -40°C to 75°C, shocks and vibration.



Narrow Ethernet switch, five RJ45 ports with 10/100 Mbps on all ports, automatic data transmission speed detection, autocrossing function, and QoS



The Westermo range of industrial Ethernet switches are designed for use in harsh environments and allow you to build cost-effective, reliable, secure industrial networks.

## Contact Us

For more information, pricing, or custom solutions, please contact us:

Website: <https://indzawo.co.za>

Email: [sales@indzawo.co.za](mailto:sales@indzawo.co.za)

Phone: +27 71 296 8473

Address: 22 Quantum Street, Midrand, 1685, Gauteng, South Africa

This document is for informational purposes only. Specifications subject to change without notice.

