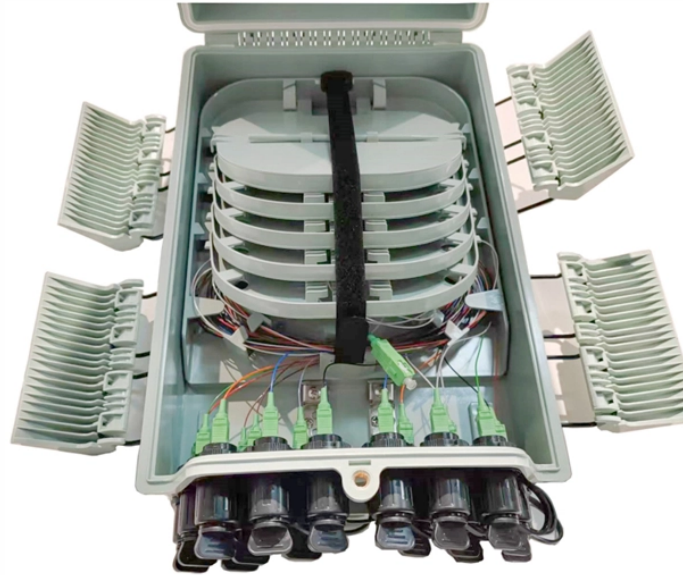


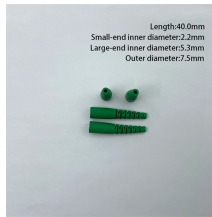
Industrial Socket Distribution Box Installation Diagram



Industrial Socket Distribution Box Installation Diagram



This document provides a wiring diagram for a 63A, 5 pin industrial socket outlet. It shows power being supplied from a distribution board through a 63A 4 pole MCB.



These DWG files provide a full range of electrical system installation details, including cable tray supports, power outlets, isolator switch configurations, fuel tank arrangements, fire alarm installation, ...



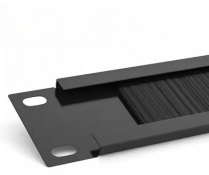
Learn about the wiring process for a 3 phase distribution board (DB) box, including the necessary steps and safety precautions. Understand how to connect the incoming power supply, distribute it to ...



Hey, in this article we are going to see the Single Phase Distribution Box Wiring Diagram and Connection Procedure. A distribution board or distribution box is where the main power supply is ...



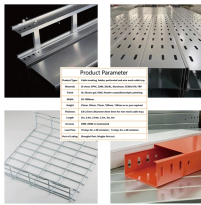
Tailor your enclosure to the exact requirements of an installation with Legrand's wide selection of equipment, including plain and perforated plates, insulated modular chassis and internal doors, ...



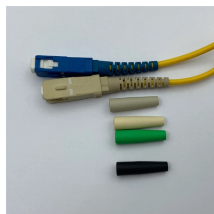
This document provides a wiring diagram for a 63A, 5 pin industrial socket outlet. It shows power being supplied from a distribution board through a 63A 4 pole MCB to the socket outlet.



Install the industrial socket outlet unit at the required position. Lay PVC conduit from the Distribution Board to the receptacle position. The conduits can be embedded into the wall structure and or lay ...



Download Schneider Electric Electrical Distribution CAD files in over 40 different file formats



A distribution board (also known as panelboard, breaker panel, electric panel, DB board or DB box) is a component of an electricity supply system that divides an electrical power feed into ...



With extensive experience of designing and producing industrial plugs, sockets and Modular Combi, ABB can provide products of high quality, functionality, reliability and safety.



Our sales team is always ready to visit customers and to provide any installation guidance and advice. Plugs and sockets with rated voltages above 50 V must have an earth contact. The sockets have a ...



This document provides a wiring diagram for a 63A, 5 pin industrial socket outlet. ...

Contact Us

For more information, pricing, or custom solutions, please contact us:

Website: <https://indzawo.co.za>

Email: sales@indzawo.co.za

Phone: +27 71 296 8473

Address: 22 Quantum Street, Midrand, 1685, Gauteng, South Africa

This document is for informational purposes only. Specifications subject to change without notice.

