

## Installation diagram of inlet and outlet pipelines of distribution box



## Installation diagram of inlet and outlet pipelines of distribution box



The configuration of a Distribution Box includes (1-3) Inlets and a ...



See a labeled septic system diagram with every component explained. Learn how the tank, baffles, distribution box, and drain field work together step by step.



Explore the comprehensive guide on septic system distribution box diagrams, covering design, function, and maintenance tips.



In this guide, we will delve into the anatomy of a septic system distribution box, exploring its components, layout, and the importance of proper installation and maintenance. We will also ...



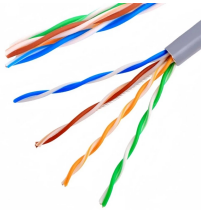
The configuration of a Distribution Box includes (1-3) Inlets and a varying number of outlets Depending on the leaching needs of the system. Please talk to one of our customer service personnel for better ...



In this depiction you can see the layout of the distribution box, and leach field as it relates to the home and septic tank. This depicts a standard “stone and pipe” leach field.



Components reviewed include septic tank outlet lines, effluent distribution lines, distribution boxes, gravity flow, pressure distribution, dosing, and siphons.



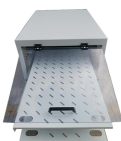
The septic tank piping diagram typically includes the following key components: the septic tank, the inlet pipe, the outlet pipe, the distribution box, and the leach field.



Distribution boxes are constructed with an inlet at the highest elevation and multiple outlets at a single lower elevation. In theory, the box will then distribute the effluent equally between trenches.



To ensure that the inlet flow disturbs the water surface as little as possible, a tee must be placed on top of the inlet. The tee should be placed unglued at the same height as the outlet pipes in order for the ...



Inlet and outlet elevations are positioned to provide equal distribution and meet most local codes. Twist and lock 4” pipe seals and plugs are easily installed and fit all 4” plastic pipes.

## Contact Us

For more information, pricing, or custom solutions, please contact us:

Website: <https://indzawo.co.za>

Email: [sales@indzawo.co.za](mailto:sales@indzawo.co.za)

Phone: +27 71 296 8473

Address: 22 Quantum Street, Midrand, 1685, Gauteng, South Africa

This document is for informational purposes only. Specifications subject to change without notice.

