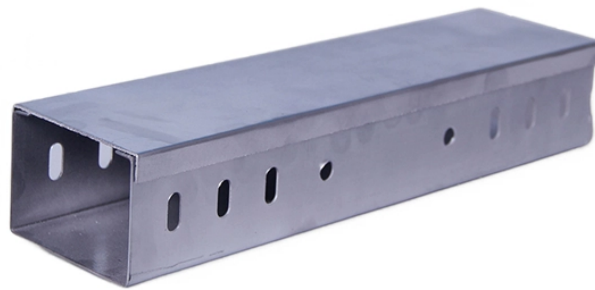


Installation method of cap-type junction box



Overview

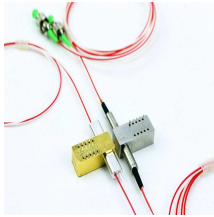
Route the 3-conductor cable through the fitting into the junction box farthest from the controller. Connect the wires from the cable to the TB3 terminal in the Junction Box. To install a junction box correctly, choose a box that matches the wiring method and environment, mount it securely, bring cables in. Do not dispose of the carton or packing materials. Failure to do so may void your warranty. If you. A junction box provides a code-approved place to house wire connections, whether for outlets, switches, or splices.



Installation method of cap-type junction box



A junction box provides a code-approved place to house wire connections, whether for outlets, switches, or splices. Here's how to install one.



Before installing the unit, please read these instructions and familiarize yourself with the requirements and functions of the device. The required personal protective equipment must always be worn when ...



If your house has visible wiring splices or if you need to add a new splice to extend a circuit, follow these simple steps to install a junction box.



The purpose of this procedure is to ensure that all works regarding electrical junction box and supports installation for electrical instrumentation works shall be done in ...



Learn how to install a junction box safely, from choosing the right box and mounting it correctly to making secure splices and following basic code-safe practices.



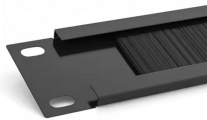
Junction-Box Junction-Box Junction-Box Installation Instructions Instructions Installation Installation JB1 Instructions tures must be grounded in accordance with local codes o the National Electrical Code. ! ...



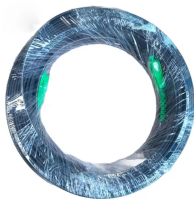
No more than one single or multi-stranded lead shall be connected to either side of any terminal unless multiple conductors have been joined in a suitable manner, e.g. two conductors into a single ...



You can trust us to guide you through the installation process, from selecting the right type of junction box to ensuring all connections are safely made. With our assistance, you can ...



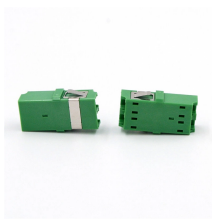
For junction boxes, this specification can take place us-ing various measures. On the one hand, through the use of a suitable cable gland, which is directly inserted into the box, and, on the other, through ...



In this video, we showcase real on-site construction photos, step-by-step installation processes, and essential tips for safe wiring and plumbing coordination.



It outlines 5 steps: 1) Prepare the junction box support base. 2) Mount the support on the prepared base. 3) Mount the junction box on the installed support. 4) Terminate cables at the junction box. 5) ...



This guide explains the key NEC junction box requirements, including box fill, splice rules, accessibility, grounding, outdoor use, common violations, and how to choose the right metal junction ...

Contact Us

For more information, pricing, or custom solutions, please contact us:

Website: <https://indzawo.co.za>

Email: sales@indzawo.co.za

Phone: +27 71 296 8473

Address: 22 Quantum Street, Midrand, 1685, Gauteng, South Africa

This document is for informational purposes only. Specifications subject to change without notice.

