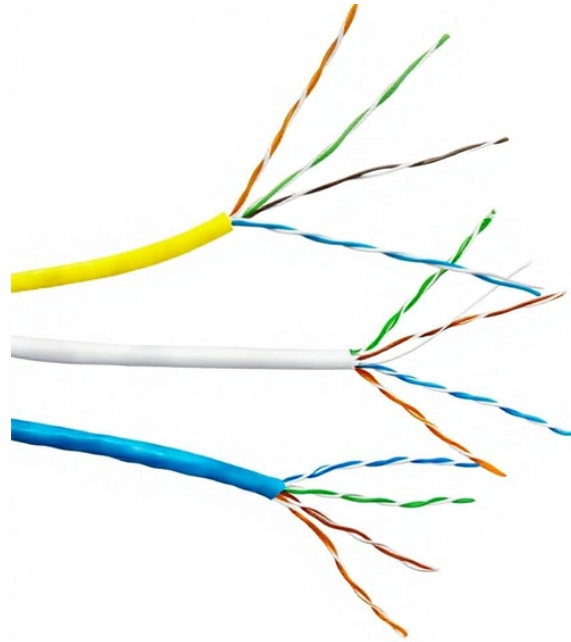


# Introduction to LR4 Optical Module



## Overview

The QSFP28 LR4 is a hot-pluggable, four-channel, and full-duplex optical transceiver module designed for long-distance transmission up to 10 km in the 100G Ethernet network with a working bandwidth of 1295nm to 1310nm. This comprehensive guide explores the. QSFP28 LR4 is a crucial technology for delivering reliable, long-distance 100G connectivity in enterprise and data center networks. The market is complex, and choosing the right module that meets your cost, performance, and compatibility needs is difficult. 3ba standard for 100G Ethernet. Unlike the QSFP28 SR4, it adopts Wavelength Division Multiplexing (WDM) technology, which multiplexes optical signals of different wavelengths from 4 channels onto a single fiber for transmission. This guide provides a comprehensive breakdown of 100G QSFP28 transceiver types, highlighting their key technical.

## Introduction to LR4 Optical Module



100G LR4 transceiver is an optical transceiver module in high-speed data communication networks. It is designed to support a data transmission rate of 100 Gigabits per second (100G) over a ...



100GBASE-LR4 (commonly known as LR4) is a mature optical transceiver standard introduced in 2010 as part of IEEE 802.3ba. It achieves 100 Gigabit per second (Gbps) transmission ...



The QSFP28 LR4 optical module is compliant with the IEEE 802.3ba standard for 100G Ethernet. Unlike the QSFP28 SR4, it adopts Wavelength Division Multiplexing (WDM) technology, ...



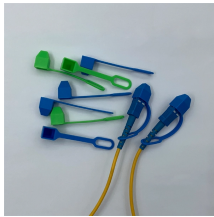
In our previous post, we provided an in-depth analysis of the 100G LR4 transceiver. Now, we will introduce the QSFP28 100G LR4 optical transceiver module, covering its definition, working ...



Compare 100G LR vs LR4 optical modules. Learn about NRZ vs PAM4 modulation, channel differences, and which module fits your network needs best.



Whether you are designing high-density cloud infrastructure, scaling an enterprise backbone, or building next-generation AI clusters, this article will help you demystify 100G QSFP28 ...



The QSFP28 LR4 (Quad Small Form-Factor Pluggable 28) optical transceiver is a high-performance module designed for long-reach data transmission in modern networking environments.



This article thoroughly reviews the core technologies of LR4, provides clear selection criteria, offers helpful tips for deployment, explores troubleshooting strategies, considers the ...



This article introduces the 100GBASE-LR4 optical module, and also describes the benefits and applications of this type of module, and how it plays an important role in 100G long-haul transmission.



You must have seen a lot of single-rate 100G QSFP28 optical modules, such as SR4, LR4, PSM4, CWDM4, ER4, etc. However, in this article, ETU-LINK will introduce you to the dual-rate ...



This article thoroughly reviews the core technologies of LR4, provides clear selection criteria, offers helpful tips for deployment, explores troubleshooting ...

## Contact Us

For more information, pricing, or custom solutions, please contact us:

Website: <https://indzawo.co.za>

Email: [sales@indzawo.co.za](mailto:sales@indzawo.co.za)

Phone: +27 71 296 8473

Address: 22 Quantum Street, Midrand, 1685, Gauteng, South Africa

This document is for informational purposes only. Specifications subject to change without notice.

