

Is it good to install a beam splitter in a low-voltage electrical box



Overview

I think your answer is Yes the HVAC people are correct, if you need to do some 24V and 120V switching in the same box and obviously the circuits are not connected. the 24V 18/2 is a class 2 circuit. You need 18/2 rated 600V or splice to a wire rated 600V like 14/2. From T-taps to lever-nuts, discover the 6 best splitters for low voltage wiring. You've run the wire for your new landscape lights, but now you're staring at the end of the main line and three separate fixtures that need power. Or. This article will cover everything you need to know about low-voltage wiring, from low voltage cables to low voltage wiring code, and why it is crucial for security integrators and system owners.

Is it good to install a beam splitter in a low-voltage electrical box



Even when we're talking about low voltage wiring systems, invariably the low voltage electrical power comes first from a line-voltage 120VAC or 220VAC source, then is converted to the necessary lower ...



Whether you're planning a DIY upgrade or hiring professionals, this guide breaks down the key concepts, wiring types, ...



They are claiming that as long as I junction the 18-2 into a 14-2 NM-B before it goes into my switch box then I don't have to separate the high and low voltage in the box.



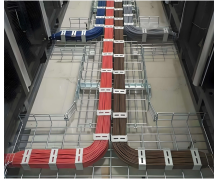
Whether you're planning a DIY upgrade or hiring professionals, this guide breaks down the key concepts, wiring types, installation tips, and safety codes you need to know for a successful ...



I wasn't worried about voltage drop - the runs in my circuit were very short and I split it in the middle to avoid any concern (and even if I had just done one string for the entire side, it would ...



Cutting ears off a new work box and screwing through the sides seems to be a pretty clear violation of the manufacturer's installation instructions and would therefore void the UL approval.



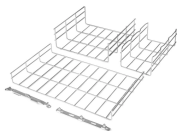
If you're considering installing or upgrading a low voltage system, this guide will help you navigate through the basic principles and codes that govern low voltage wiring in both residential and ...



The primary rule for in-wall low voltage placement is maintaining separation from high voltage power lines to prevent electrical induction and dangerous faults.



From T-taps to lever-nuts, discover the 6 best splitters for low voltage wiring. Find the ideal connector to ensure a safe and reliable connection.



You should be able to connect any and all devices operating in the IEC Extra Low Voltage (ELV) range in any neat, safe, workmanlike manner and your "local code", whatever that is, ...



Professional low voltage installation that exceeds minimum code requirements protects both immediate safety and long-term system reliability, preventing electrical fires and electrical shock.



They are claiming that as long as I junction the 18-2 into a 14-2 NM-B before it goes into my switch box then I don't have to separate the high and low voltage in the box.

Contact Us

For more information, pricing, or custom solutions, please contact us:

Website: <https://indzawo.co.za>

Email: sales@indzawo.co.za

Phone: +27 71 296 8473

Address: 22 Quantum Street, Midrand, 1685, Gauteng, South Africa

This document is for informational purposes only. Specifications subject to change without notice.

