

## Is it okay to run the electrical wiring in the distribution box along the ground



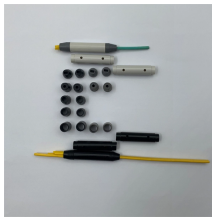
### Overview

Grounding keeps everyone safe by directing any stray electricity safely into the ground. Make sure to ground all metal parts, including the box itself. The neutral wire is just as important. In this guide, we'll break down everything you need to know to install a distribution box correctly and confidently. Choose the right box based on environment (indoor/outdoor), load capacity, and durability. Check for proper IP/NEMA ratings and material quality. Ensure safe placement: install in. A PVC conduit comes out of the ground about 18" from one of the posts, so I need to bridge that small gap. 5 covers burial depth, and for RMC\* I can get by with only 6" of burial depth. Electrical receptacles (also called electrical outlets or "plugs" or "sockets") are simple devices that are easy to install, but there are details to get right if you want to be safe.

## Is it okay to run the electrical wiring in the distribution box along th



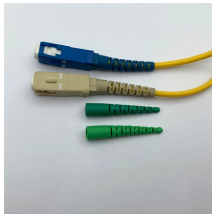
It's one of those gray areas that is all depends on your inspector and their mood they're in. Romex shouldn't be used anywhere that's subject to physical damage. Obvious places like that are along ...



I had an electrician wire a 240v circuit to our detached garage with a NEMA 14-50 plug at the end and I'm wondering if he should have run conduit? The electrical box is on the back of the ...



All home electrical systems must be bonded and grounded according to code standards. This entails two tasks: First, the metal water and gas pipes must be connected electrically to create a ...



The electrical circuit wire must be properly routed and secured between the electrical panel and the receptacle location, and must be properly secured at the junction box that is to hold the electrical ...



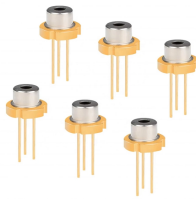
A handhole goes down INTO the ground. The cover is level with the ground surface. But if you want to add a few more boards to the board-on-post solution and make it a box, that's fine so ...



If you have rocky or heavy clay soil or tree roots that makes digging a chore, or you only need to run wire a short distance, go this route. It minimizes digging and provides superior protection ...



Learn how to install a distribution box safely and correctly. Covers wiring, placement, standards, and expert tips for a compliant setup.



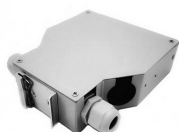
The following hazards are the most frequent causes of electrical injuries: contact with power lines, lack of ground-fault protection, path to ground missing or discontinuous, equipment not used in manner ...



Hey there! If you're working with electrical systems, you know that grounding isn't just some bureaucratic requirement—it's literally the difference between a safe, functional system and a potential disaster. ...



A handhole goes down INTO the ground. The cover is level with the ...



Simply attaching a ground wire to a metal box isn't always sufficient if the box itself isn't properly grounded. Always consult a professional if you're unsure about the grounding in your home.

## Contact Us

For more information, pricing, or custom solutions, please contact us:

Website: <https://indzawo.co.za>

Email: [sales@indzawo.co.za](mailto:sales@indzawo.co.za)

Phone: +27 71 296 8473

Address: 22 Quantum Street, Midrand, 1685, Gauteng, South Africa

This document is for informational purposes only. Specifications subject to change without notice.

