

Is it okay to use wire to bind cables in cable trays



Overview

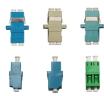
Due to their exposure to the open air because of the cable trays, the wires contained within need a very durable outer covering. The regulations dictate that the cables must either be Type TC (also known as Tray Rated) or must be metal-armored (Type MC). This is a description of how to select, install, and support these metal or plastic frames, on which electrical wires are installed. You should consider it as a series of instructions that make the buildings resistant to. However, while wire mesh trays offer mechanical and thermal advantages, proper grounding and bonding are critical to ensure electrical safety, NEC compliance, and long-term system reliability.



Is it okay to use wire to bind cables in cable trays



Cable assemblies and flexible cords and cables shall be supported in place at intervals that ensure that they will be protected from physical damage. Support shall be in the form of staples, cables ties, ...



Learn the best practices for installing cables in trays. This guide covers essential steps, technical requirements, and key details for efficient cable tray installation.



Metallic cable trays are usually bonded and may sometimes form part of the equipment grounding path when permitted by code and manufacturer data. Bond tray sections together using ...



Cables and conductors must be secured to the cable tray at intervals according to installation instructions. For non-horizontal runs, cables should be fastened securely to transverse ...



Cable tray layout must take into consideration the design limits of the cable. To minimize damage and verify integrity after installation, follow the practices outlined in cable handling and testing procedures ...



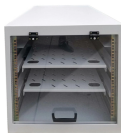
Regulation 412.2.4.1 treats the cable assembly as equivalent to Class II equipment, so a single insulation fault cannot raise the tray to a dangerous ...



Regulation 412.2.4.1 treats the cable assembly as equivalent to Class II equipment, so a single insulation fault cannot raise the tray to a dangerous voltage. Leaving it isolated is actually ...



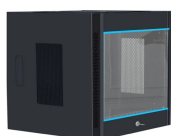
Learn proper methods for tying electrical cables per NFPA 70 (NEC). Avoid hazards and ensure compliant installations. Learn more now.



When pulling medium voltage cable in cable trays, use the conductor for pulling, not the insulation or cable jacket. Remove enough cable jacket, insulation, and any other material to expose the bare ...



However, while wire mesh trays offer mechanical and thermal advantages, proper grounding and bonding are critical to ensure electrical safety, NEC compliance, and long-term ...



The short answer is no. Due to their exposure to the open air because of the cable trays, the wires contained within need a very durable outer covering. The regulations dictate that the cables ...

Contact Us

For more information, pricing, or custom solutions, please contact us:

Website: <https://indzawo.co.za>

Email: sales@indzawo.co.za

Phone: +27 71 296 8473

Address: 22 Quantum Street, Midrand, 1685, Gauteng, South Africa

This document is for informational purposes only. Specifications subject to change without notice.

