

Is the fiber optic cable used in CD players single-mode or multimode



Overview

Multimode fiber optic cable allows multiple modes of light transmission simultaneously. It has a larger core diameter, typically 50 or 62. Although they can do the same job in some instances, the different construction methods make each of them better suited to certain tasks and budgets. This small diameter core, typically around 9 microns in diameter, allows only one mode of light to pass through, resulting in a narrower beam of light. Although single mode fiber (SMF) and multimode fiber (MMF) optic cable types are widely used in diverse applications, the differences between single mode fiber and multimode fiber optic cables are still confusing. From the fiber core and core size to single mode fiber and multimode fiber cables, each type of optical cable serves a specific purpose depending on transmission distance, network. On the basis of the mode of propagation of light there are two kinds of fiber cables: SMF (Single-Mode Fibers) is the fiber cable that is designed to carry only a single mode of light that is the transverse mode. By the end, you will know exactly which fiber type suits your network environment.

Is the fiber optic cable used in CD players single-mode or multimode



Our comprehensive guide to types of fiber optic cables. Learn all about the differences between single mode and multimode cables, as well as the various fiber wavelengths and standard core sizes used ...



First the basics.... single mode fiber is designed to propagate a single light mode whereas multimode supports multiple simultaneous light modes. This difference impacts bandwidth, ...



There are two main types of fiber optic cables: single mode and multimode. Although they can do the same job in some instances, the different construction methods make each of them better ...



Learn the complete differences between single mode and multimode fiber optic cables, including distance, core size, wavelength, cost, and best ...



Learn the differences between multimode (OM1-OM5) and single mode (OS1-OS2) fiber optic cables—speed, distance, applications, and how to choose the right one for data centers and ...



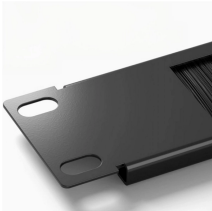
SMF (Single-Mode Fibers) is the fiber cable that is designed to carry only a single mode of light that is the transverse mode. These are used for the long-distance transmission of signals.



Single mode fiber is designed with a small size fiber core that allows only one light signal to propagate. This reduces signal loss and enables much longer distances compared to multimode fibers.



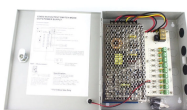
In this in-depth single mode vs. Multimode Fiber comparison, I will compare those two fiber optic cables, helping you learn the difference and determine which best suits your fiber cabling ...



Learn the complete differences between single mode and multimode fiber optic cables, including distance, core size, wavelength, cost, and best applications.



We breakdown the differences between single mode and multimode fiber optic cable, covering aspects like physical structure, bandwidth over distance, and typical integration in networks.



The differences between single mode vs multimode fiber lie in the core diameter, wavelength, bandwidth, color sheath, distance, and cost. Read the complete comparison guide to get ...

Contact Us

For more information, pricing, or custom solutions, please contact us:

Website: <https://indzawo.co.za>

Email: sales@indzawo.co.za

Phone: +27 71 296 8473

Address: 22 Quantum Street, Midrand, 1685, Gauteng, South Africa

This document is for informational purposes only. Specifications subject to change without notice.

