

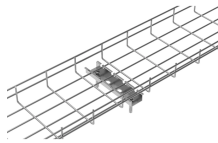
Italian 12-core fiber optic patch panel



Italian 12-core fiber optic patch panel



A complete line of fiber optic patch panels. 12 fiber 24 core, 48, 72 & 144 fiber configurations. Standard 1U, 2U, 3U and 4U and optical distribution frames.



Buy premium Fiber Optic Patch Panels - unloaded or pre loaded. Choice of 8, 12 & 24 ports fiber panels for multimode and singlemode fiber cable. Shop now.



Typically, they look like trays, and are designed to house dense arrays of fiber optic cables and optical fibers in a way that protects the fibers and arranges them so they are easy to work with and maintain.



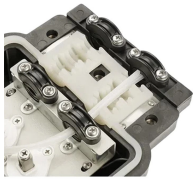
Explore CommScope's efficient and scalable fiber splice panels designed for seamless connectivity. Accommodating LC, SC, and MTP/MPO connectors, these panels are ideal for data centers, ...



Explore fiber patch panels for network infrastructure. Find LC, SC, and ST connector options for your telecommunications or data center needs.



Product Overview Suitable Applications: Fiber Express solution for Backbone, Telecommunication Room, Main Distribution room and Data centers



Optical patch panels Optical patch panels for rack ETSI/ANSI 19" and 21" with fiber trays, MUX and DEMUX systems for DWDM and CWDM networks.



Corning has a wide variety of hardware solutions to choose from to fit your cabling needs. Choose from racks, panels, modules, splice trays, ethernet fiber switches and other structured cabling components.



Designed for general-purpose fiber termination, this panel accommodates 12 individual fiber cores and supports multiple connector types (such as LC or SC). It is commonly used in wiring closets, server ...



Our fiber patch panel offers options for flexible cable management and seamless integration with various cassettes and fiber optic accessories.

Contact Us

For more information, pricing, or custom solutions, please contact us:

Website: <https://indzawo.co.za>

Email: sales@indzawo.co.za

Phone: +27 71 296 8473

Address: 22 Quantum Street, Midrand, 1685, Gauteng, South Africa

This document is for informational purposes only. Specifications subject to change without notice.

